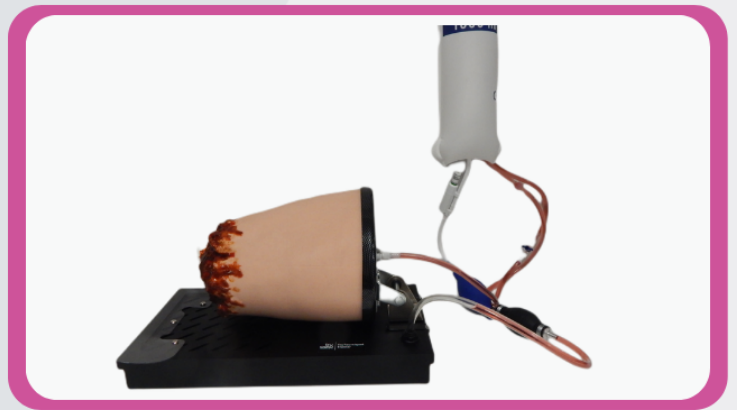


# TruTourniquet User Manual



**A realistic solution for haemorrhage control training**

**TruTourniquet has been designed to practise massive haemorrhage control in lower extremity trauma.**

**The model is based on a right thigh and provides realistic bleeding control with visual feedback on user performance.**

## Contents

Product specifications .....	2
Package contents .....	2
Recommended equipment.....	2
Initial Set-Up .....	3
Fluid Insertion.....	4
Tourniquet application .....	6
Fluid removal .....	7
Stump removal .....	10
Care and maintenance .....	10
Warranty .....	11

## Product specifications

Product Code: TTQ1000

TruTourniquet weight: Approx. 5kg

TruTourniquet dimensions: 43 x 22 x 25cm

Full shipment weight: Approx. 7kg

Full shipment dimensions: 46 x 26 x 33cm

## Package contents

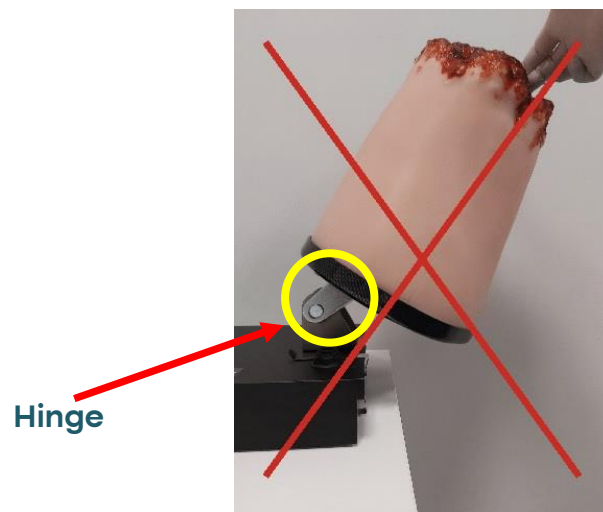
- 1 TruTourniquet unit with base clips & pressure pump (TTQ1000)
- 1 TruTourniquet carrier case
- 1 spare hinge pin with split ring
- 3 spare splash shield attachment screws
- Concentrated blood 250ml (CVB250)
- Plastic Funnel

## Recommended equipment

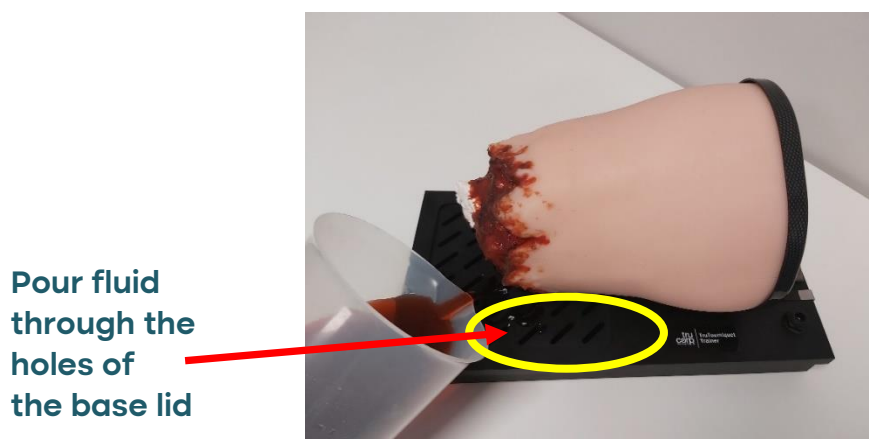
- Combat Application Tourniquet (CAT)

## Initial Set-Up

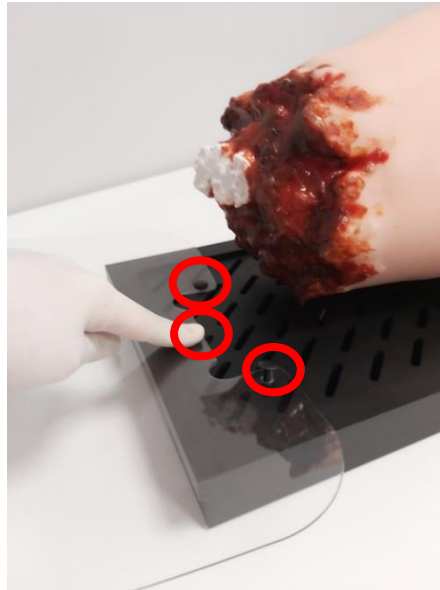
1. Gently remove the model from the carrier case and place on a suitable flat surface. Ensure to securely lift the model from under the base when removing from the carrier case – do not lift from the stump. Do not place the hinge of the product near the table/surface edge. Please also be careful not to lift the stump over the safe range (shown below). The stump weight may cause instability which can cause damage if the product falls.



2. Mix the concentrated blood provided with approx. 2L of water as instructed on the label or at your own discretion to obtain desired blood colour. Distilled water can be used as a substitute for blood, if desired.
3. Pour prepared fluid into the pump container. Replace lid.



4. Attach the splash shield to the base using 3 screws provided. The shield should be bent slightly to allow efficient liquid drainage.



## Fluid Insertion

1. Insert the quick connector to the panel mount on the end of the stump. Make sure the panel mount (in red circle below) is pressed in securely to the product before inserting the quick connector, otherwise you will be not able to push the connector into the panel mount. You should hear an audible "click" sound when both elements are connected properly.



2. Insert the tube with the hand pump attached to the inlet in the base lid. Push the tube in as far as possible and then gently pull the tube to check if the connection is secure.



3. To ensure effective fluid flow, we recommend the pressure infusor is elevated/hooked to a drip stand (please note this is not provided with the product). If the product is used without a drip stand or similar, please ensure the blood bag outlets are always covered with fluid after filling the bag to avoid air in the blood supply system.

## Tourniquet application

1. Press the sprayer handle down and push the trigger lock forward to allow constant liquid flow. If 2L of liquid is being used, pressurize the pump with approx. 5 - 7 pumps or until desired pressure of the flow is achieved. The product is now ready to use. (NOTE: To keep desired pressure of the liquid flow, add a few pumps during using of the product).
2. Lift the stump up and place the tourniquet around it, at least 2 inches above the wound.
3. Pull the tourniquet band tightly and fasten it (please use tourniquet as per supplier instructions).



4. Twist the windlass rod until the blood flow has fully stopped. Secure the rod inside the clip. Additionally, secure with a strap.
5. If the bleeding does not stop fully, you can place another tourniquet above the first one or apply another twist.



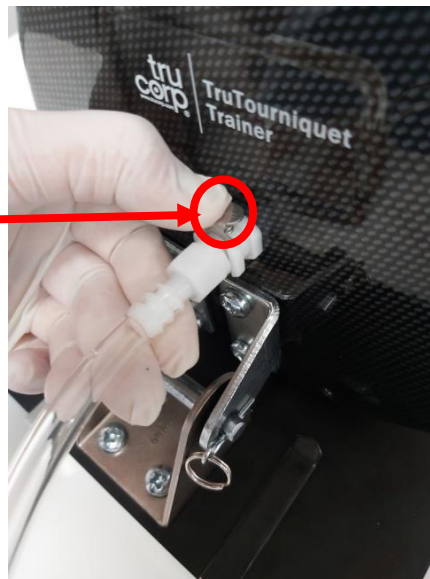
6. To stop the flow of the liquid from the pump, unlock and release the sprayer handle. If there's no liquid left in the pump's container, pour the liquid from the base container back to the pump container using funnel provided to use the product again.

## Fluid removal

*Please note:* It is important to remove all fluid before storage or transportation.

1. Unscrew the sprayer and empty the pump container. There may be a small amount of fluid remaining in the tubes and stump. To remove it, press the sprayer handle down after the sprayer was unscrewed and let the fluid drain. You can also pressurize the empty pump to let the air push the liquid out of the tubes.
2. Disconnect the quick connector by pushing the panel mount button.

Panel mount  
button





3. Disconnect the tube from the base lid inlet, firstly by pressing inwards on the connector and then pulling the tube outwards.



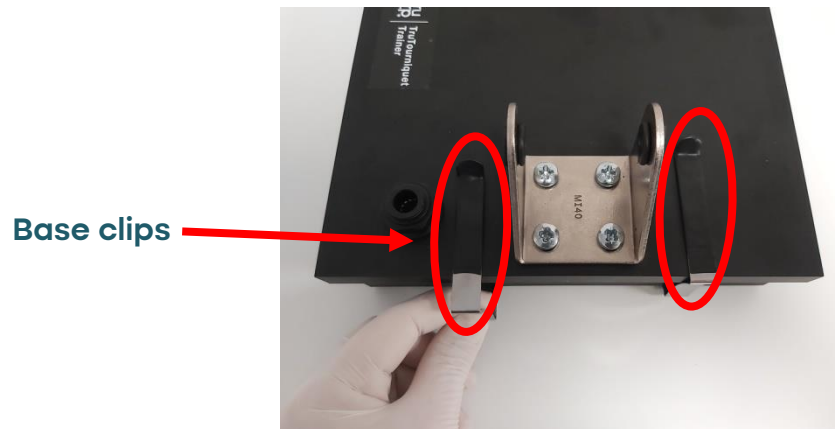
4. Dry off excess fluid on the splash shield and then remove the screws which secure it to the lid of the base. Please ensure to stabilise the base lid.
5. Remove the split ring that secures the hinge pin in place.



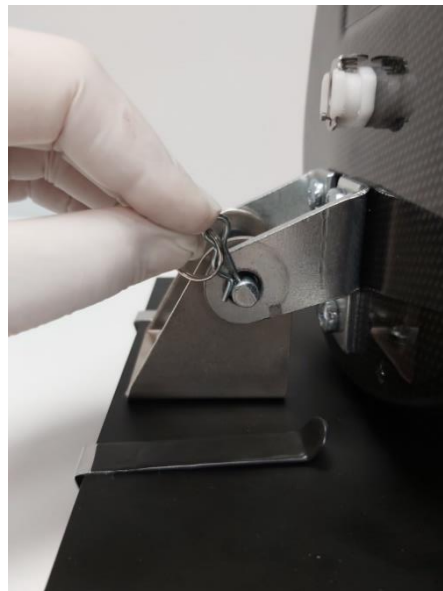
6. Remove the hinge pin and carefully remove the stump.



7. Remove the 2 black base clips securing the base and the lid together.



8. Lift the base lid and pour the liquid out of the container and clean afterwards.
9. Place the lid back on the container and secure again with the same 2 black base clips. Make sure the curved part of the clip is placed on the lid and facing up.
10. Put the stump back on the lid and align the lid hinge with the inner sides of stump hinge.
11. Insert the hinge pin through the aligned holes to secure into place. Please be careful of the rubber washers on either side. The clip should be inserted with the straight part to ensure smooth entry.



12. Place the product and all parts in the carrier case for secure storage.

## Stump removal

If desired, tourniquet training can be carried out without the stump being attached to the base. This may be beneficial for training outdoors or to enhance realism of a scenario, but please note the fluid will not be re-cycled during use without the base. The fluid will need to be re-filled after each use to maintain the desired fluid volumes.

Please carefully follow the steps given in the previous section (Fluid Removal) for guidance on this.

## Care and maintenance

Store the product in clean, dry conditions away from heat and direct sunlight; avoid contact with metals, solvents, oils or greases and strong detergents. When the product is not in use please store in the black carrier case provided.

Clean the product with alcohol wipes or other alcohol based cleaner and gently wipe with a cloth. Do not scrub as it may cause the paint to wear. Make sure to completely dry the product before storing to prevent mold and fungal built-up.

Mild detergents or enzymatic cleaning agents may be used on the product in accordance with the manufacturer's instructions and at the proper dilution. The detergent must not contain skin or mucous membrane irritants. We recommend using Milton sterilising fluid to remove any bacteria within the tubes.

*Please do not use any of the following when cleaning the product:*

- Germicides, disinfectants, or chemical agents such as glutaraldehyde (e.g. Cidex®),
- Ethylene oxide, phenol-based cleaners or iodine-containing cleaners

**In response to the recent COVID-19 pandemic, we recommend this additional step to ensure the product is fully sanitised:**

Use alcohol spray (minimum 75%) and wipe off. Repeat this for 3-4 times to ensure to kill the virus completely.

## Warranty

TruCorp warrants this unit to be free of defects in materials and workmanship and to give satisfactory service for a period of 1-year from the date of delivery. This ensures that our customers receive maximum coverage on each product. If the unit should malfunction it must be returned to the factory for evaluation. Upon examination by TruCorp, if the unit is found to be defective it will be repaired or replaced at no charge.

TruCorp will pay for the freight/delivery and the actual parts needed free of charge if any part of the product fails within the 1-year period.

However, these warranties are VOID, if; the unit shows evidence of having been tampered with or shows evidence of having been damaged by excessive heat, the use of sharp instruments, misapplication, misuse or other operating conditions outside of TruCorp' s control. Components which wear or are damaged by misuse are not warranted and will be charged for if repair has been approved. Warranty is void if third party products are seen to have damaged or caused failure of the TruCorp models.

**Please direct all warranty and repair inquiries to:**



TruCorp Ltd  
33 Waringstown Road  
Lurgan, Co. Armagh  
BT667HH  
N. Ireland  
Email: [info@trucorp.com](mailto:info@trucorp.com)  
Tel: +44 (0) 28 3888 2714