

The logo for 'limbs& things' is displayed in white lowercase text on an orange square background. The background of the entire page is a complex, abstract composition of overlapping geometric shapes in various shades of blue and teal, creating a sense of depth and movement. Scattered throughout this background are faint, semi-transparent illustrations of various prosthetic and orthotic devices, including a prosthetic arm, a prosthetic hand, a prosthetic foot, a prosthetic leg, a prosthetic torso, and a prosthetic head. The overall aesthetic is clean, modern, and technical.

limbs&
things

MILITARY RANGE

limbsandthings.com



“

Hello

Limbs & Things is a world leader in manufacturing premium task trainers that enhance the capabilities of any clinical skills programs.

For 35 years we have manufactured and distributed a full range of products to meet the curriculum needs for all levels of medical training. We have outlined some of our key products that specifically cater to the training needs of military and government and their patients that in- turn enhance provider capabilities.

The highlighted items in this brochure are from our Women’s Health, Men’s Health, ATLS, FLS, and Procedural skills product ranges. All Limbs & Things products can be found on our website, GSA Schedule, ECAT, and The FLS Products site.

Please don’t hesitate to contact me with any questions you may have or to schedule a demonstration.

Mike Kelly

CPT, MSC, USA Ret.

General Manager L&T US & Canada

T:(912) 660-3562

E: mike.kelly@limbsandthings.com

”



PROCEDURAL SKILLS

- 4 VENIPUNCTURE ARMS
- 6 CATHETERIZATION
- 8 ABDOMINAL EXAMINATION
- 10 KNEE ASPIRATION & INJECTION T.
- 11 SHOULDER INJECTION TRAINER

WOMEN'S HEALTH

- 13 BIRTHING SIMULATOR PROMPT FLEX
- 22 CLINICAL FEMALE PELVIC TRAINER
- 24 BREAST EXAMINATION TRAINER

MEN'S HEALTH

- 26 MALE RECTAL EXAMINATION TRAINER
- 28 CLINICAL MALE PELVIC TRAINER

FLS RANGE

- 30 FLS

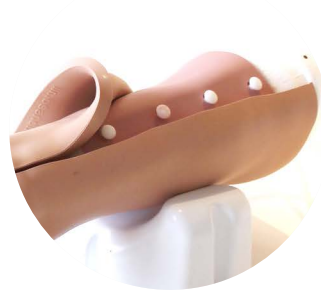
ATLS RANGE

- 32 CHEST TRAUMA MANAGEMENT
- 34 AIRSIM ADVANCE X & AIRSIM COMBO X
- 35 CLEEN BLEED MAT

VENIPUNCTURE ARMS

The Venipuncture Arms Range provides the ideal training platform for practicing the skills related to venipuncture and IV cannulation.

Suitable for undergraduate and postgraduate level training.



Our patented skin* locking mechanism ensures the model is easy to re-skin whilst maintaining the lifelike haptics of the underlying and fully palpable basilic, cephalic and dorsal metacarpal veins.

Basic Venipuncture Arm

70304

70305

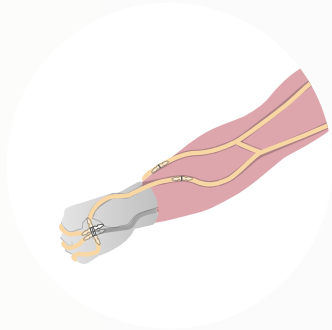
Designed with a basic vein structure, this model contains basilic and cephalic veins only.

Standard Venipuncture Arm

70302

70303

For cost effective training the modular vein system contains ACF and metacarpal vein anatomy.

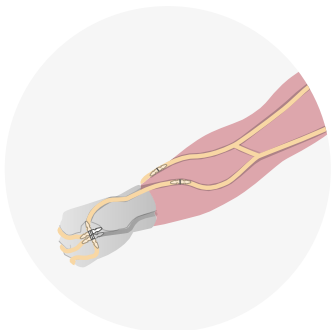


Advanced Venipuncture Arm

70300

70301

The Advanced Venipuncture Arm features ACF vein anatomy which is connected to a pressurized fluid system for a realistic blood supply.



* PCT/GB2021/052719

SKILLS

- Venipuncture
- IV Cannulation
- IV Infusion
- Practice of aseptic technique



■ Visual inspection and palpation
■ Gripping system provides true-to-life vein placement
■ Ability to position the hand for life like cannula insertion

QUALITIES

REALISM

- Realistic blood flashback
- More realistic arm look and feel
- Gripping system provides true-to-life vein placement

KEY FEATURES

- Realistic and palpable vein haptics promote accurate clinical use
- Easy-to-fit skin-locking system (patent pending*) increases anatomical realism
- New vein gripping feature facilitates correct vein positioning, repeatable training and an easier re-skinning process
- Enables the application of digital pressure to stem blood flow
- Infusion tube allows for IV fluids to be administered
- Can be used in conjunction with a simulated patient

VERSATILITY

- Compatible with vacuum blood collection systems, needle & syringe, and IV cannulas
- Durable skin
- Extended tubing allows for simulated patient in a classroom setting
- Veins can withstand up to 500 stabs from a 21g needle
- Arm can be upgraded through purchase of modular veins and the Advanced Pressurized Pump

SAFETY

- Basic, Standard and Advanced veins contain latex
- Latex free Basic vein is available but durability is decreased

CLEANING & CARE

- Easy to clean, service and maintain

FEATURES

- Patented skin locking mechanism
- Vein gripping system for easy set up
- Modular veins for cost effective training
- Realistic palpable veins
- Realistic blood flashback
- Extended tubing for hybrid simulation
- Gravity system
- Pressurized fluid system

70304	70302	70300
70305	70303	70301

✓	✓	✓
✓	✓	✓
×	✓	✓
✓	✓	✓
✓	✓	✓
✓	✓	✓
✓	✓	×
×	×	✓

WHAT'S INCLUDED

70304	70302	70300
70305	70303	70301

Venipuncture Arm	✓	✓	✓
Venipuncture Arm Skin	✓	✓	✓
Basic Venipuncture Arm Vein	✓	×	×
ACF Vein Module	×	✓	✓
Metacarpal Vein Module	×	✓	✓
Gravity System Blood Supply	✓	✓	×
Pressurized Venipuncture Arm Blood Supply	×	×	✓
Concentrated Venous Blood - Starter Pack	✓	✓	✓
Venipuncture Arm Rest	✓	✓	✓
Refill Bottle	×	×	✓
Venipuncture Arm Infusion Tube	✓	✓	✓
Lube Sachet (x3)	✓	✓	✓

CATHETERIZATION TRAINER RANGE



The Catheterization Range facilitates the teaching of urethral and suprapubic catheterization across all levels of training.

Interchangeable modules allow practice of the fundamental procedures of male and female urethral catheterization, as well as more advance skills of suprapubic management and ultrasound guided insertion.

The anatomically accurate trainers include a supple urethra and resistant sphincter providing a closer to life training experience.

Male Catheterization Trainer



60850

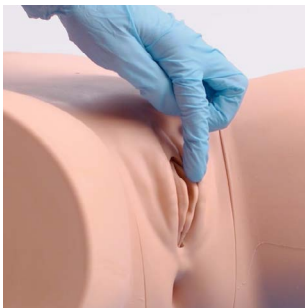
60870

The male trainer has soft and compliant genitalia to enhance the realistic experience of catheter insertion.

Replaceable and removable foreskin.



Female Catheterization Trainer



60851

60869

The female trainer has soft labia allowing trainees to practice parting using the aseptic no touch technique, as well as management and care of a pre-inserted suprapubic catheter via the pre-ported bung.



Suprapubic Insertion Unit



60852

60873

Optional module, designed for advanced skills training, allowing trainees to master ultrasound guided suprapubic catheterization insertion.

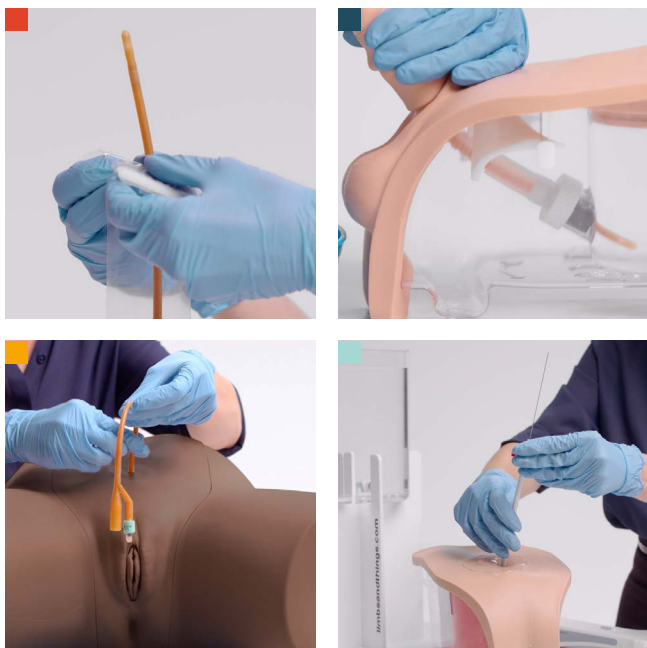
Fits into male and female Catheterization Trainers.



SKILLS

- Correct handling of male and female anatomy
- Aseptic catheterization technique
- Withdrawal of catheter
- Urinary catheterization
- Suprapubic catheter management - female module
- Suprapubic catheter insertion (blind and ultrasound guided)*
- Ultrasound bladder scanning on a full bladder*
- Fluid management

* 60852 | 60873 Only



- Aseptic catheterization technique
- Ability to view catheter path when module used without pelvic shell
- Suprapubic management
- Suprapubic catheter insertion

WHAT'S INCLUDED

	60850	60851	60852	60853	60854
	60870	60869	60873	60871	60872
Male Catheterization Module	✓	×	×	✓	✓
Female Catheterization Module	×	✓	×	✓	✓
Suprapubic (Ultrasound) Catheterization Module	×	×	✓	×	×
Suprapubic Insertion Bungs (x2)	×	×	✓	×	×
Catheterization Foreskins (x3)	✓	×	×	✓	✓
Aseptic Catheterization Sleeves (x2)	✓	✓	×	✓	✓(x2)
Water System	✓	✓	✓	✓	✓(x2)
Pelvic Shell & Stand	✓	✓	×	✓	✓(x2)
Water Extension Tubing	✓	✓	×	✓	✓(x2)
Limbs & Things Lubricant	✓	✓	×	✓	✓(x2)
Antifungal Agent (Milton Sterilizing Fluid)	✓	✓	✓	✓	✓(x2)
14 French Foley Catheter	✓	✓	×	✓	✓(x2)
Plastic Kidney Dish	✓	✓	×	✓	✓(x2)

QUALITIES

REALISM

- Supple urethra & resistant sphincter providing realistic response
- Flaccid penis and removable foreskin
- Vaginal opening and realistic urethral meatus
- Anatomically accurate bladder

KEY FEATURES

- Ability to assess the student's progress
- Ultrasound compatible*
- Easy to set-up
- Non-drip valve
- Modular

VERSATILITY

- Easily interchangeable male, female and suprapubic catheterization modules
- Removable foreskin

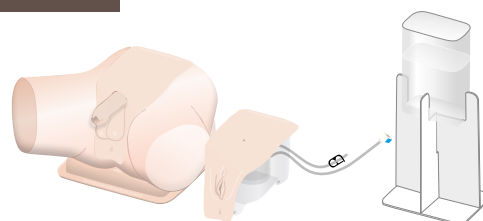
SAFETY

- Trainer is latex free (catheters provided contain latex)

Standard Catheterization Trainer Set

60853

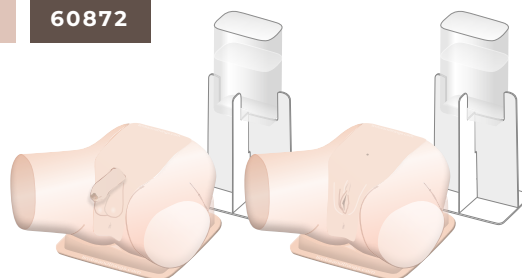
60871



Advanced Catheterization Trainer Set

60854

60872



Abdominal Examination Trainer

60000

60054

An anatomically accurate adult male torso, used to teach and practice the palpation, auscultation and percussion elements of abdominal or gastrointestinal (GI) examination.

With interchangeable organs of varying sizes, and an integral MP3 player providing realistic sounds, the trainer provides the ability to recognize and differentiate a range of abnormal organs and pathologies.



Ideal for **OSCE** preparation and assessment.



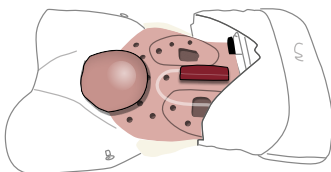
SKILLS

- Familiarity with the abdominal regions and underlying anatomy
- Practice in abdominal palpation, auscultation and percussion
- Ability to differentiate normal from abnormal anatomy
- Identification of ascites, specifically shifting dullness and fluid thrill
- Identification of gaseous distension and bowel obstruction
- Ballotment of kidneys
- Professional-to-patient communication

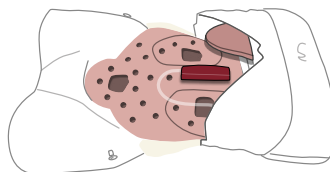


EXAMPLES OF SET UP FOR SCENARIOS

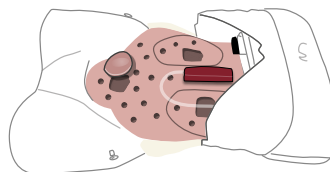
ACUTE URINARY RETENTION - BLADDER



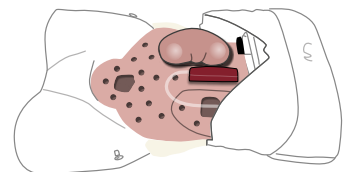
SLIGHTLY ENLARGED LIVER



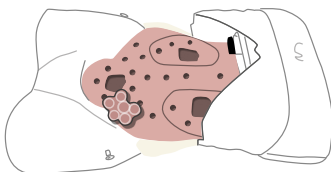
OVARIAN CYST - SMOOTH SOFT MASS



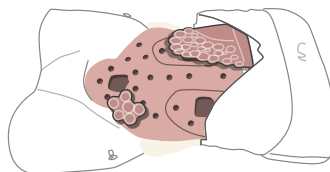
ENLARGED KIDNEY



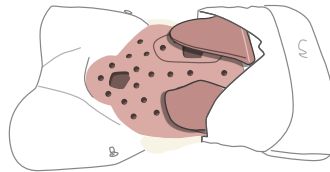
CARCINOMA ON MASS IN LEFT ILIAC FOSSA



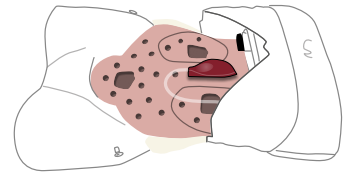
CARCINOMA WITH LIVER METASTASIS



LYMPHOMA



AORTIC ANEURYSM





Ballottement of kidneys

Training in auscultation

Gaseous distension & ascites simulation

Interchangeable organs & pathologies

QUALITIES

REALISM

- Organs feel realistic on palpation and respond appropriately to percussion
- Lifelike quality of abdominal skin accommodates stretching for gaseous distension and ascites simulation
- Realistic ballottement of enlarged kidney

VERSATILITY

- Abdominal skin is simple to remove, allowing quick and easy changeover of organs
- Suitable for both bench top use and hybrid use with simulated patient
- Model can be rolled onto side for examination of ascites and shifting dullness

KEY FEATURES

- Interchangeable organs and pathologies of varying sizes can be quickly and easily inserted into the abdomen
- Trainer or simulated patient can vary respiratory movement of liver and spleen by the turn of a wheel
- Integral amplifier and surface mounted MP3 player allow training in auscultation of normal and high-pitched or obstructed bowel sounds, renal and aortic bruits - in variable locations
- Volume of bowel sounds can be adjusted and MP3 player allows for additional sounds to be loaded
- Distension set allows for the following:
 - Realistic checking for ascites using percussion, shifting dullness or fluid thrill technique
 - Simulation of bowel obstruction on percussion and auscultation
- Pulse bulb allows simulation of normal and aneurysmal aortic pulse

SAFETY

- Latex free

CLEANING & CARE

- Skin surface is washable using soap and water

ANATOMY

- Torso featuring abdomen, pelvis and lower part of thorax
- Bony landmarks include ribs, costal margin, xiphisternum, pubic crest and anterior superior iliac spines
- 3 Livers: slightly enlarged, enlarged with smooth edge and enlarged with irregular edge
- 2 Spleens: slightly enlarged and markedly enlarged
- 2 Enlarged Kidneys
- Distended Bladder
- 2 Aortas: normal and aneurysmal
- Set of 6 Abdominal Pathologies includes:
 - 4 Smooth masses: 2 sizes, each with hard and soft version
 - 2 Irregular hard masses
- Distension Set includes:
 - Ascites bag
 - Gaseous distension bag, pump and foam insert
- Simplified representation of lower thoracic & lumbar spine

WHAT'S INCLUDED

Abdominal Examination Base Unit
 Abdominal Examination Skin
 Abdominal Examination Rectus Bag
 Abdominal Examination Organ Locator
 Abdominal Wall
 Abdominal Examination Livers (Set of 3)
 Abdominal Examination Spleens (Set of 2)
 Abdominal Examination Kidneys (x2)
 Abdominal Examination Bladder
 Abdominal Examination Pathologies (Set of 6)
 Abdominal Examination Aortas (Set of 2)
 Abdominal Examination - Distension Set
 International 5V DC Power Supply
 AA Batteries (x4)
 Carry Case (x2)

Knee Aspiration & Injection Trainer with Ultrasound Capability

70103

70114

An anatomically accurate adult knee model for aspiration of synovial fluid and joint injection from both the lateral and medial aspects, using ultrasound-guidance or palpation.

The robust sealed knee includes knee joint, patella, patellar tendon and the suprapatellar space.

SKILLS

- Injection into joint cavity
- Aspiration of synovial fluid from both the lateral and medial aspects
- Competence using ultrasound technology to perform systematic scanning techniques and examination of the knee joint
- Identification of anatomical landmarks using ultrasound guidance or the palpation method
- Patient positioning and management
- Recognition of joint effusion
- Ballottement

ANATOMY

- Key anatomical landmarks are realistic to palpate:
 - Skin
 - Subcutaneous fat, quadriceps tendon & patellar ligament
 - Prefemoral, suprapatellar & Hoffa (infrapatellar) fat pad
 - Femur
 - Medial & lateral collateral ligament
 - Tibia
 - Patella
 - Joint space & synovial recess
 - Meniscus
 - Muscle mass of quadriceps



Key internal landmarks visible under ultrasound



QUALITIES

REALISM

- Discrete muscle and skin layers provide realistic tissue and needle response
- Anatomically accurate synovial sac and palpable patella
- Realistic color and consistency of synovial fluid

KEY FEATURES

- 1000+ stabs per module with 21 gauge needle
- Precise, palpable anatomy with bony landmarks
- Robust, sealed knee unit that holds all anatomy
- Key internal landmarks visible under ultrasound
- Compatible with all standard ultrasound machines
- Echolucent material allows aspiration and injection under ultrasound-guidance
- Suitable for undergraduate and postgraduate medical study
- Knee skin is watertight

VERSATILITY

- Caters for ultrasound-guided technique as well as palpation
- Can be used with leg supports for supine position, or without leg supports for side of bed position
- Separate Fluid Bag & Stand ensure the model is easy to use and mobile
- Clear indicator on fluid bag to prevent overfilling

SAFETY

- Latex free

WHAT'S INCLUDED

70103

70114

Ultrasound Knee Module for Aspiration & Injection
 Fluid Bag and Stand
 Synovial Fluid (including Syringe)
 Needle Set – 3 Green Needles, 1 Syringe, 1 Sharps Bin
 Leg Unit, including removable supports
 Carry Case

SHOULDER INJECTION TRAINER RANGE

This range combines physical practice with the guidance of technology. It provides a repeatable teaching and training platform for shoulder injections in the 4 most common sites.

Both models share a common torso but offer different levels of complexity to support trainees from early learning through to specialist level.

Shoulder Injection Trainer - Palpation Guided

70200

70219

With tablet included, the accompanying Android app allows learners and teachers to visualize the underlying anatomy, as well as clearly signalling success.

SKILLS

- Practice multiple approaches to specific sites
- Identification of anatomical landmarks using palpation guidance
- 4 common injection sites:
 - Acromioclavicular Joint
 - Glenohumeral Joint
 - Bicipital Groove
 - Subacromial Space
- Rotation of the shoulder to locate head of the humerus

QUALITIES

REALISM

- Discrete muscle and skin layers for realistic needle feel

KEY FEATURES

- Palpation to find the four most common injection sites
- Instant feedback for the trainee when a site is correctly located
- Injections from multiple approaches to allow for different preferences
- Suitable for postgraduate learning
- App features full 360-degree view of underlying anatomy and injection site to aid learning
- Cost effective replacement skins

VERSATILITY

- Each skin can withstand up to 500 injections per site
- Simple Bluetooth connection between app and trainer
- Requires only a standard needle (supplied)
- Batteries (2 x AA supplied) last for up to 500 hours

SAFETY

- Latex free

WHAT'S INCLUDED

Shoulder Module - Palpation Guided

Shoulder Skin (x1 spare)

Shoulder Torso

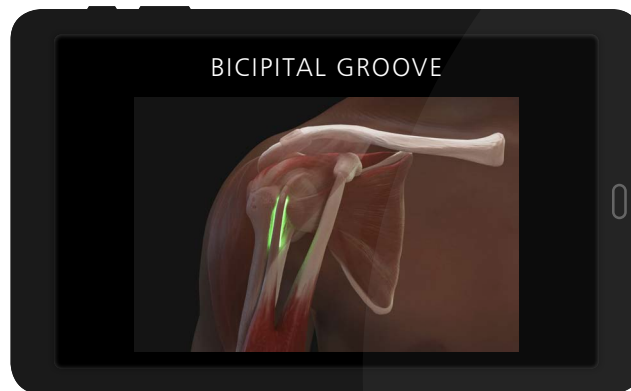
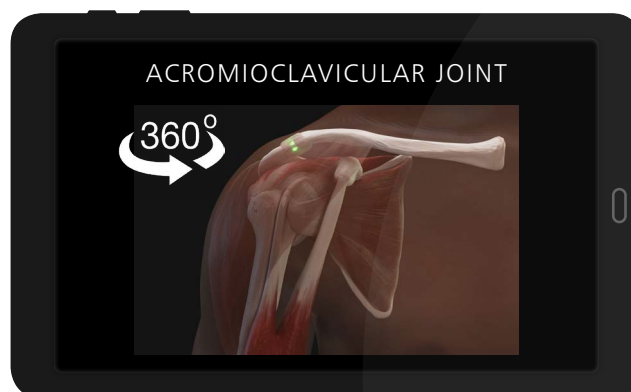
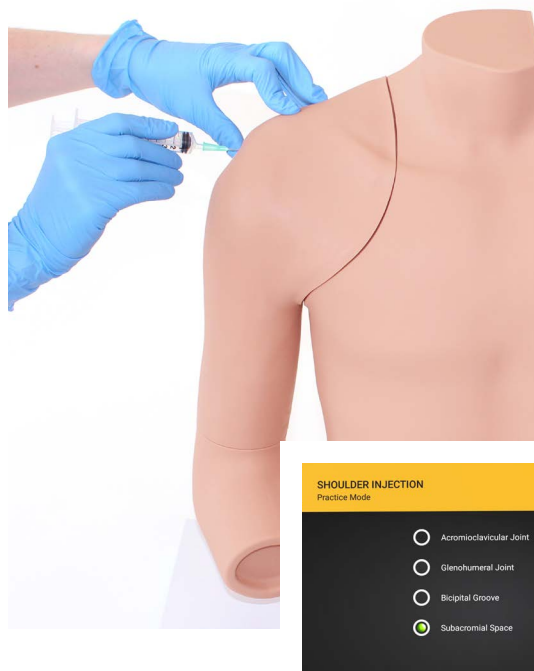
Needle Set

Android Tablet

Elbow

AA Batteries (x2)

Carry Case



The application includes interactive shoulder anatomy and links to injection technique guides.

Shoulder Injection Trainer - Ultrasound Guided

70202

70221

Caters for ultrasound guided techniques, as well as allowing injection and aspiration of fluids under ultrasound.

SKILLS

- Patient positioning and management
- Identification of anatomical landmarks using ultrasound guidance
- 4 common injection sites:
 - Acromioclavicular Joint
 - Glenohumeral Joint
 - Biceps Tendon Sheath (which lies in the Bicipital Groove and surrounds the tendon)
 - Subdeltoid Bursa (in the Subacromial Space)
- Competence using ultrasound technology to perform injections in different planes using different approaches
- View the suprascapular nerve under ultrasound



QUALITIES

REALISM

- Innovative materials within the shoulder create close to life ultrasound images

KEY FEATURES

- Echolucent materials visible under ultrasound represent the key internal landmarks
- Successful injection can be confirmed by visualizing fluid entering the site, or by aspirating fluid
- The quantity of fluid in the Subdeltoid Bursa can be adjusted, from no fluid present to a fluid-filled distension for differing skill levels
- Nerve block functionality - allows trainees to view and inject around the suprascapular nerve

VERSATILITY

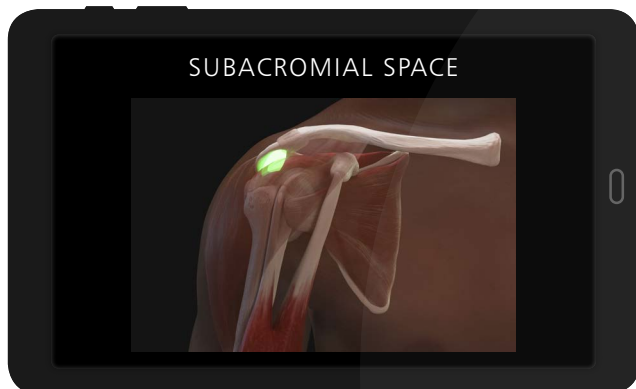
- Watertight and durable for up to 400 injections per site
- Altering the size of the bursa allows trainers to change the level of difficulty of training (less fluid is more challenging to inject)
- Synovial fluid has a realistic color

SAFETY

- Latex free

WHAT'S INCLUDED

- Shoulder Module - Ultrasound Guided
- Shoulder Torso
- Ultrasound Shoulder Filling Kit
- Needle Set
- Synovial Fluid (250ml)
- Elbow
- Carry Case



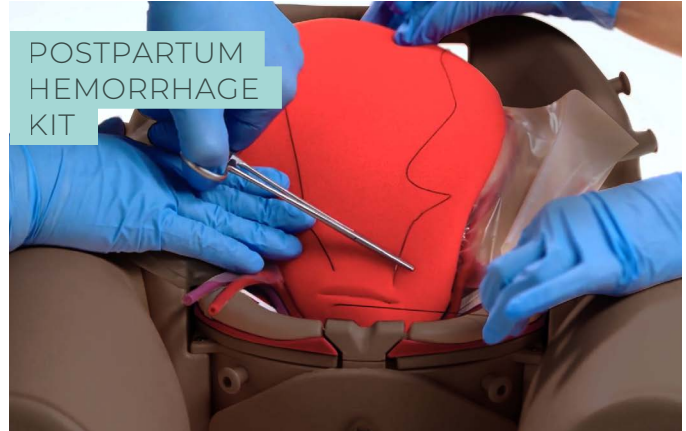
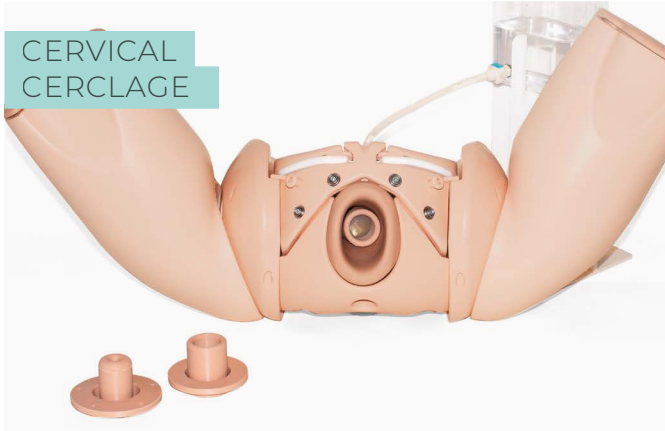
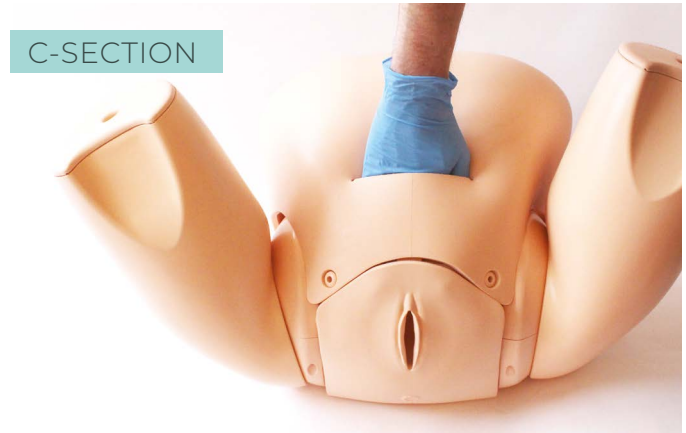
BIRTHING SIMULATOR - PROMPT FLEX RANGE

The **Birthing Simulator - PROMPT Flex Range** and its modules are anatomically correct and have been designed in collaboration with clinicians to aid the training and practice of normal and difficult births (including shoulder dystocia), to improve outcomes for mothers and babies during childbirth.



Additional modules

Fit either the Standard or the Advanced units allowing you to tailor your training needs.



Clean Bleed™ Mat

This easy to setup and mess free product has the ability to create the impression of hemorrhages such as postpartum through a controlled flow into a sealed mat.

See page 1 for more details.



Birthing Simulator - PROMPT Flex - Standard

80100

80200

A modular design birthing simulator allowing for numerous training scenarios.

Used either for stand-alone training or integrated into hybrid simulation, it is an ideal training solution for all skills relating to routine and difficult deliveries.



Birthing Simulator - PROMPT Flex - Advanced

80106

80206

Incorporates wireless force monitoring where force applied to the baby's head is measured during a shoulder dystocia drill. Includes an app with inbuilt scenarios allowing monitoring and recording of force, interventions made and time taken to deliver the baby.



Tablet not included
Download app at limbsandthings.com

QUALITIES

ANATOMY

- Birth canal and cervix
- Ischial spines and pubic bone
- Gynecoid pelvis
- Articulating thighs
- IM injecting
- Fully articulated baby with detachable umbilical cord and placenta
- Baby includes clavicles, fontanelles and flexible head

KEY FEATURES

- Improved and more realistic pelvic floor
- Articulating thighs for McRoberts procedure
- Stretchable perineum
- Soft flexible birthing canal
- Additional modules to extend learning
- Optional lower legs for extended realism
- Optional wireless force monitoring for training in shoulder dystocia management

SAFETY

- Latex free

CLEANING & CARE

- Skin is washable using soap and water

SKILLS

	80100	80106
	80200	80206
• Communication & team work skills (SP)	✓	✓
• Normal	✓	✓
• Breech	✓	✓
• Shoulder dystocia management	✓	✓
• Instrumental (forceps & vacuum devices)	✓	✓
• Delivery of placenta	✓	✓
• Cord prolapse	✓	✓
• Urinary catheter placement	✓	✓
• IM injection pads	✓	✓
• Force feedback of baby's head	x	✓
• App with scenarios & force monitoring	x	✓

WHAT'S INCLUDED

	80100	80106
	80200	80206
Birthing Mother (+ Upper Legs)	✓	✓
Standard Baby	✓	x
Wireless Force Monitoring Baby	x	✓
Placenta	✓	✓
Abdomen for PROMPT Flex	✓	✓
Perineum and Birth Canal	✓	✓
Bed Straps	✓	✓
Lubricant	✓	✓
Wheeled Carry Case	✓	✓

Cervical Dilatation & Effacement Module (CD&E) - PROMPT Flex

80102

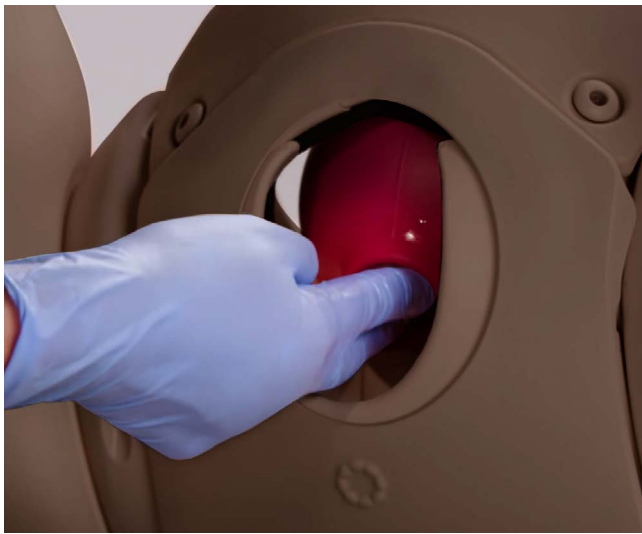
80202

Allows for training in assessment of both the latent and active first stages of labor.

This versatile module is an optional add-on to the Birthing Simulator - PROMPT Flex - Standard/Advanced.



Ideal for midwifery training.



Fetal station adjustment (-3 to +3) Cervical Dilatation (1-10cm)

QUALITIES

REALISM

- Realistic representation of cervixes, including anterior lip, and presenting parts in soft birth canal, with palpable ischial spines

KEY FEATURES

- Inserts to represent early labor cervixes - effacement, dilation and ripeness in line with Bishop's scoring
- Positioning mechanism allows adjustment of station, dilation and tilt without removal from the simulator
- Dynamic positioning mechanism allows adjustment of dilation in active labor
- Markers allow tutor to read positioning in situ
- Numerous presenting part inserts including
 - flexed
 - deflexed
 - brow
 - face
 - breech
 - caput and moulding

VERSATILITY

- Presenting parts and cervix can be set up outside the model for demonstration, then placed inside for examination

SAFETY

- Latex free

SKILLS

- Assessment and Bishop's scoring of:
 - Cervical dilation (1-10cm)
 - Cervical effacement (0-100%)
 - Cervical ripeness/consistency (soft, medium, hard)
 - Cervical position (anterior, mid, posterior)
 - Fetal station (-3 to +3)
- Assessment of and artificial rupture of membranes
- Assessment of presenting part - flexed, deflexed, brow, face, breech, caput and moulding and caput formation

WHAT'S INCLUDED

80102

80202

Perineum
Pelvic Ring
Static Rig
Dynamic Rig
Set of 7 Latent Labor Cervixes
Dynamic Cervix
Set of 5 Presenting Parts
Set of 2 Difficult Labor Heads
Amniotic Membrane Set
Set of 3 Caputs (x2)

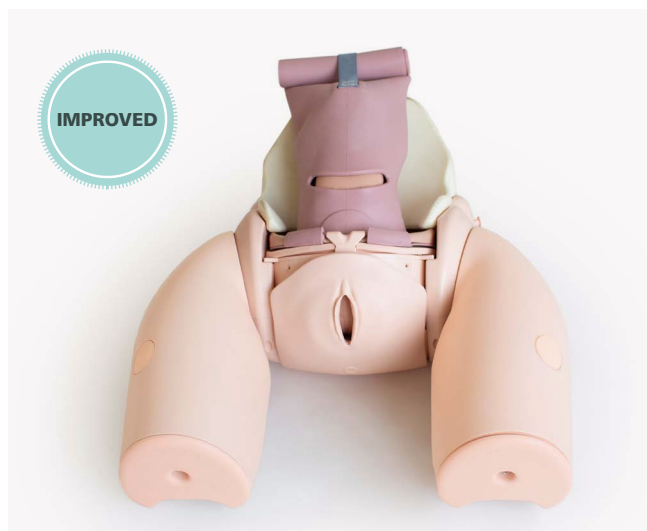
Enhanced Cesarean Section Module (ECSM) - PROMPT Flex

80300

80400

Ideal for practicing the necessary skills required when performing both routine and complex cesarean section. Trainees can have exposure to delivering a difficult baby such as an impacted fetal head (IFH), or a transverse lie.

A pre-incised abdomen allows for repeated delivery practice to help improve confidence and familiarity of maneuvers.



QUALITIES

REALISM

- Abdominal skin has realistic appearance, fat layer and feel of at-term abdomen
- Realistic feel of uterus interior during delivery
- Head and shoulders present at realistic level in relation to the uterine incision

KEY FEATURES

- Uterus holds baby firmly in position for cephalic, breech and transverse presentations
- Fundal pressure can be applied to aid delivery of the baby for IFH maneuvers
- Pre-incised skin allows easy repeat delivery practice
- Realistically mimics the restrictive space of the pelvic inlet for IFH maneuvers
- Accommodates retraction using metal, plastic or rubber retractors

VERSATILITY

- Allows for training in routine and complex caesarean section at full dilation

SAFETY

- Latex free



The module can be used to practice any of the following methods of delivering a deeply impacted fetal head:

- Manual cephalic extraction maneuvers
- Vaginal push up
- Reverse breech extraction (pull technique)
- Patwardhan's technique
- Use of a fetal pillow



SKILLS

- Cephalic and breech delivery
- C-section at full dilation:
 - Head disimpaction using vaginal push methods
 - Use of balloon disimpacting device
 - Reverse breech extraction
 - Patwardhan's techniques
- Transverse lie
- Instrument assisted C-section delivery
- Delivery of the placenta for routine c-sections
- Teamwork and human factors training in emergency C-section

WHAT'S INCLUDED

80300

80400

Perineum
Uterus for Cesarean Section Module
Impacted Fetal Head Uterus
Pre-incised Delivery Skin
Cervix for Cesarean Section Module
Foam Uterus Support
Pelvic Floor

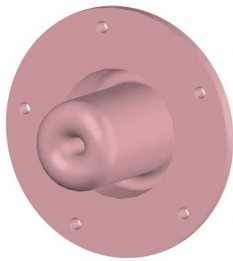
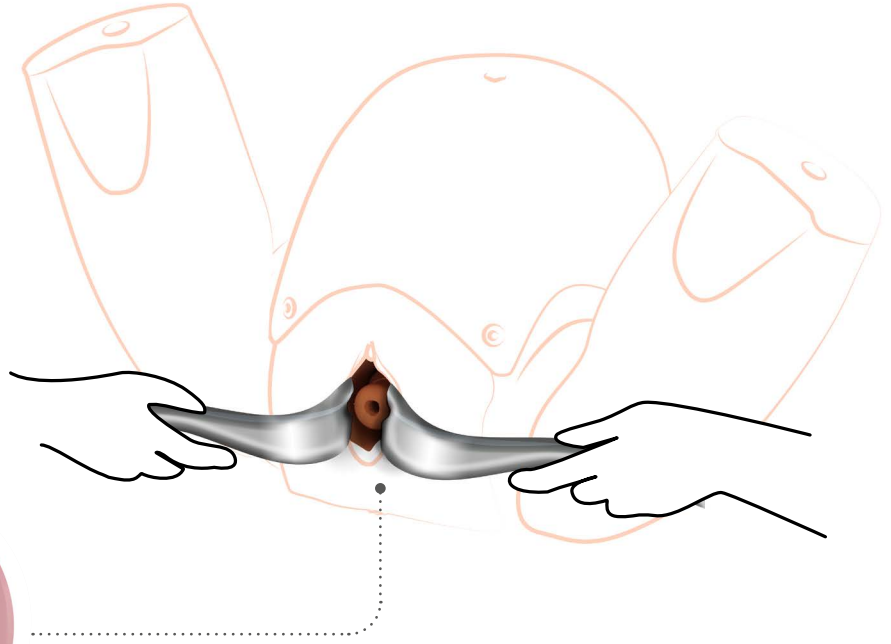
Cervical Cerclage Module - PROMPT Flex

80180

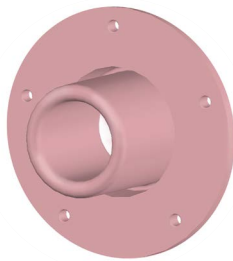
80280

This module is the ideal tool for trainees looking to develop the skills of elective and emergency cervical cerclage.

The easy to use design offers realistic movement of the cervix down the vaginal vault, enabling trainees to place the cerclage as high up the cervix as possible, which supports the learning of the McDonald technique.



Elective



Emergency

SKILLS

- Management of cervical incompetence
- Elective cerclage
- Emergency (or rescue) cerclage
- McDonald cerclage technique

QUALITIES

REALISM

- Realistic representation of a dilating cervix with presenting amniotic sac for emergency procedures
- Restrictive space within the vagina to perform the procedure as in life

KEY FEATURES

- Detachable cervix to allow for repeated training in both elective and emergency cerclage procedures
- The detachable OS provides instant feedback to the trainee
- Fluid filled amniotic sac replicates bulging membranes for emergency procedures

VERSATILITY

- Allows for the practice of both elective and emergency cervical cerclage
- Can be quickly and easily fitted into PROMPT Flex

SAFETY

- Main product is latex free however Amniotic Sacs provided contain latex



Developed in collaboration with:

- Dr. Graham Tydeman, Consultant Obstetrician and Inventor, NHS Fife
- Professor Andrew Shennan OBE and Professor Annette Briley, Guy's and St. Thomas' NHS Foundation Trust



WHAT'S INCLUDED

80180

80280

- Cervical Cerclage Frame
- Cervical Cerclage Vagina
- Cervical Cerclage Elective OS (x5)
- Cervical Cerclage Emergency OS (x5)
- Cervical Cerclage Amniotic Sacs (x5)
- Cervical Cerclage Fluid System
- Cervical Cerclage Perineum

Maternal Hemorrhage Simulator - PROMPT Flex

80190

80290

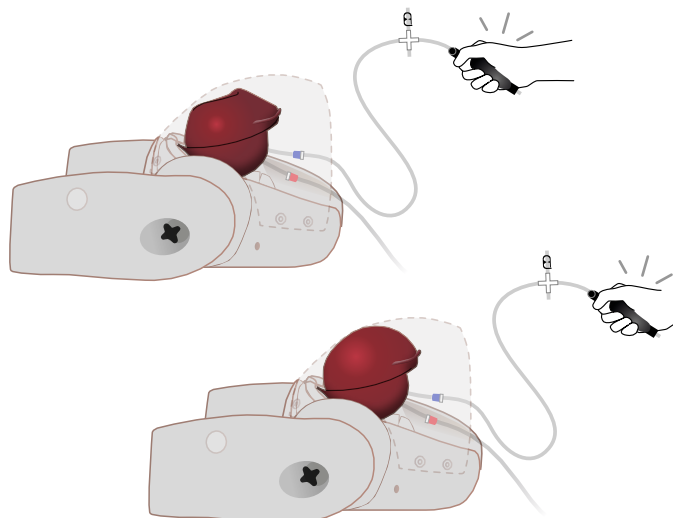
This kit includes a PROMPT Flex birthing mother, an abdomen and Concentrated Venous blood, as well as a container. This allows for the creation of multiple simulated post-partum training scenarios, and is an ideal training solution for the skills related to effectively managing a post-partum hemorrhage. The maternal hemorrhage simulator may be used for hybrid simulation as well as stand-alone bench top training.

In line with the Joint Commission requirement that all JCAHO accredited facilities will conduct maternal safety insitu training, including that of Postpartum Hemorrhage, the Maternal Hemorrhage kit has been created for effective identification and management of PPH with an atonic and contracting uterus. The new standards released by the Joint Commission address the most common findings that lead to poor outcomes for women.



SKILLS

- Management of postpartum bleeding:
 - Fundal massage
 - Bi-manual compression
 - Hemostatic balloon insertion and management
- Communication skills with the mother when used with a standardized patient
- Intramuscular injection
- Estimation of blood loss



QUALITIES

ANATOMY

- Anatomically accurate representation of mother with postpartum bleeding
- Realistic feel of fundal massage and bi-manual compression

REALISM

- Realistic simulation of atonic and contracting uterus
- Anatomically accurate mother
- Ability to give intramuscular injection
- Realistic blood loss volume

KEY FEATURES

- Blood loss of up to 2 liters can be simulated
- Air bulbs are used to stimulate blood flow and control atonic state of the uterus

VERSATILITY

- Use in training room or in situ as team training or with a standardized patient

SAFETY

- Latex free

WHAT'S INCLUDED

80190

80290

Postpartum Hemorrhage Module - PROMPT Flex
 Birthing Mother - PROMPT Flex - Standard/Advanced
 Abdomen - PROMPT Flex - Standard/Advanced

Postpartum Hemorrhage Module - PROMPT Flex

80101

80201

This module is an optional add-on for the Birthing Simulator - PROMPT Flex - Standard/Advanced.

It allows training in the management of post-partum bleeding, and offers a realistic simulation of an atonic and contracting uterus.



WHAT'S INCLUDED

80101

80201

PPH Uterus Assembly - PROMPT Flex

Concentrated Venous Blood - Starter Pack (x2)

PPH Blood Container - PROMPT Flex

Postpartum Hemorrhage Kit - PROMPT Flex

80112

80212

This kit consists of the PPH module, Compression Suture Uterus and a pre-incised skin. It offers everything required for the management of postpartum bleeding and care including performing a compression suture and ligating the uterine artery.

To be used with the Birthing Simulator - PROMPT Flex - Standard/Advanced.



WHAT'S INCLUDED

80112

80212

Postpartum Hemorrhage Module - PROMPT Flex

Compression Suture Uterus (Pack of 2)

Pre-incised Delivery Skin for PROMPT Flex



ECOSystems with Birthing Simulator PROMPT Flex

These ECOSystems provide all the equipment required to run the American College of Obstetricians & Gynecologists **Emergencies in Obstetric Courses (ECO)**

SKILLS

- Communication and team work skills (SP)
- Shoulder dystocia
- Postpartum hemorrhage
- Umbilical cord prolapse
- Vaginal breech delivery

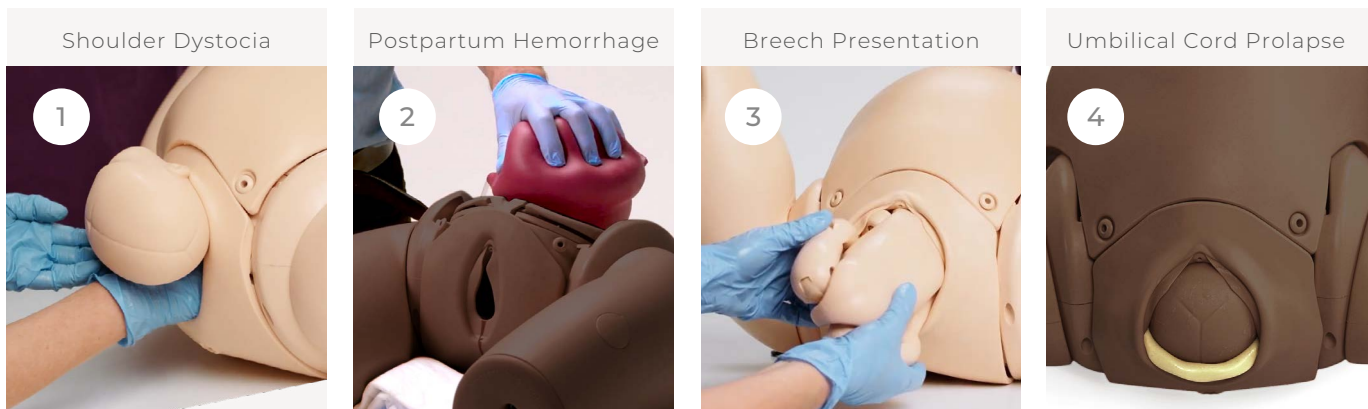
3 SIZES

The 3 ECOSystems have been designed to offer affordable and portable training for varying sizes of teaching groups from 1 to over 10 learners

ECOSystem Small	ECOSystem Intermediate	ECOSystem Large
80197 80297	80198 80298	80199 80299
1-5 learners 1 station at a time	5-10 learners 2 stations at a time	+10 learners 4 stations at a time

5 STATIONS

There are 5 teaching stations in total for ECO (5th being communication). Each ECOSystem provides all the equipment needed.



WHAT'S INCLUDED

	80197 80297	80198 80298	80199 80299
Birthing Simulator - PROMPT Flex - Standard	x	✓	✓ (x2)
Birthing Simulator - PROMPT Flex - Advanced	✓	✓	✓
Postpartum Hemorrhage Kit - PROMPT Flex	✓	✓	✓
Birthing Mother - PROMPT Flex	x	x	✓
Abdomen - PROMPT Flex - Standard/Advanced	x	✓	✓
Piper Forceps	✓	✓	✓

Clinical Female Pelvic Trainer (CFPT) Mk 3 - Standard & Advanced

STANDARD

60900

60930



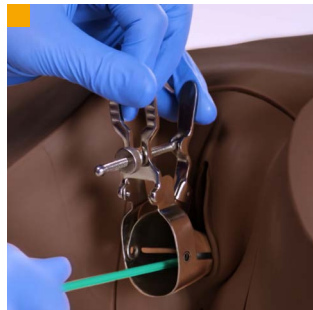
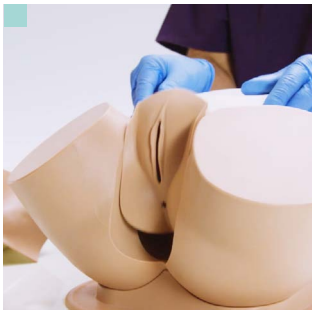
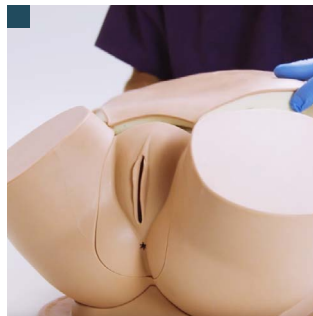
The CFPT Mk 3 is an anatomically accurate and tactile representation of the female pelvis. It is the ideal platform for hands-on examination as well as diagnosis of female conditions and minor pathologies. It can be used for many levels of training from undergraduate onwards, as well as in family health.



Validated in the
International Journal of Gynecology and Obstetrics.
Volume 124, pp. 270-3, 2014.

SKILLS

- Recognition of perineal and pelvic anatomy including bony landmarks
- Digital vaginal examination
- Bi-manual examination
- Cervical smear procedure (including use of speculum)
- Digital rectal examination
- Professional-to-patient communication



Bi-manual examination
... allowing uterine module
to be lifted out

Abdominal wall lifts off...
Use of speculum
and cervical broom

QUALITIES

ANATOMY

- Abdomen, pelvis and genitalia
- Vagina, cervix, anus and lower bowel
- Advanced model comes with interchangeable uterine modules with different complications
- Modules:
 - Normal - Nulliparous Cervix
 - Large Fibroid - Nulliparous Ectropion Cervix
 - Small Fibroid - Nulliparous Polyp Cervix
 - Ovarian Cyst - Multiparous Cervix
 - Retroverted - Multiparous Cervix
 - 10-12 Weeks Pregnant
 - 14-16 Weeks Pregnant

REALISM

- Abdominal wall with fat layer makes palpation realistic
- Labia can be parted realistically
- Each uterus is presented at the correct anatomical angle

KEY FEATURES

- Partial thighs aid anatomical orientation
- Soft and strong perineum and labia

VERSATILITY

- Abdominal wall can be removed quickly and easily
- Modules can be changed quickly and easily

SAFETY

- Latex free

CLEANING & CARE

- Skin surface is washable using soap and water

ADVANCED

60905

60935



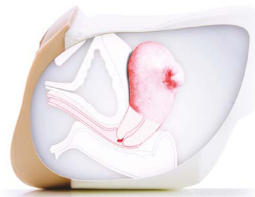
60920 | 60937

MODULE 1
Normal - Nulliparous Cervix



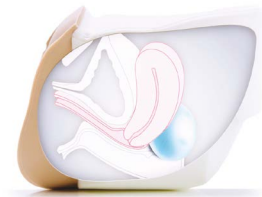
60921 | 60938

MODULE 2
Large Fibroid - Nulliparous Ectropion Cervix



60922 | 60939

MODULE 3
Small Fibroid - Nulliparous Polyp Cervix



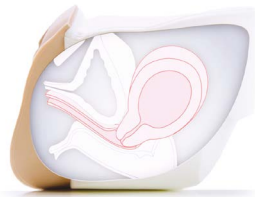
60923 | 60940

MODULE 4
Ovarian Cyst - Multiparous Cervix



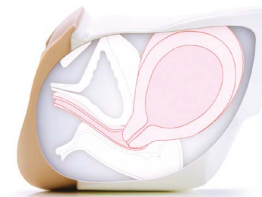
60924 | 60941

MODULE 5
Retroverted - Multiparous Cervix



60925 | 60942

MODULE 6
10-12 Weeks Pregnant



60926 | 60943

MODULE 7
14-16 Weeks Pregnant

WHAT'S INCLUDED

60900	60905
60930	60935

CFPT Abdominal Insert	✓	✓
CFPT Module 1: Normal - Nulliparous Cervix	✓	✓
CFPT Module 2: Large Fibroid - Nulliparous Ectropion Cervix	×	✓
CFPT Module 3: Small Fibroid - Nulliparous Polyp Cervix	×	✓
CFPT Module 4: Ovarian Cyst - Multiparous Cervix	×	✓
CFPT Module 5: Retroverted - Multiparous Cervix	×	✓
CFPT Module 6: 10-12 Weeks Pregnant	×	✓
CFPT Module 7: 14-16 Weeks Pregnant	×	✓
Lower Torso	✓	✓
Base	✓	✓
Tube of Aqueous Gel	✓	✓
Carry Case	✓	✓(x2)

Breast Examination Trainer - Standard, Advanced & Basic

ADVANCED

40201

41201



STANDARD

40200

41200



BASIC

40202

41202



Our Breast Examination Trainer provides a highly realistic learning platform for acquiring the skills required to perform Clinical Breast Examination (CBE).

Featuring 6 readily interchangeable and multi-positional pathologies, providing healthcare professionals with the tools to identify various complications and pathologies, including carcinomas, cysts, fibrocystic disease and fibroadenoma.



Both *simulated patient* and *bench top* training can be used in alignment with healthcare professionals promoting best practice techniques to trainees and patients, or for any undergraduate programs running **OSCEs**.



This product was developed in close collaboration with leading clinicians:

- Mr. Peter Donnelly, Torbay Hospital, UK
- Clinical Skills Resources Centre, University of Liverpool, UK
- Clinical Practice Centre, St James's University Hospital, Leeds, UK

QUALITIES

ANATOMY

- Realistic soft tissue breast anatomy
- Pathologies supplied: carcinomas: 2cm, 3cm, 5cm, cyst, fibrocystic disease, fibroadenoma

REALISM

- Soft tissue breasts look and feel realistic
- Clavicular and axilla pads for accurate lymph node placement

KEY FEATURES

- Pathologies can be placed in various predetermined location points and are easily changeable
- Dual purpose product: bench top and Simulated Patient
- Hard torso available for bench top use

VERSATILITY

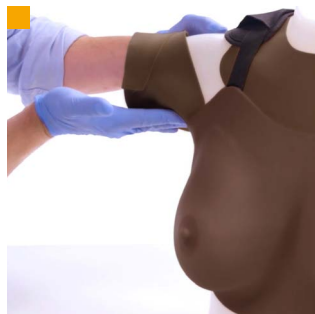
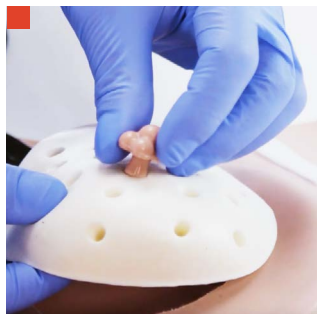
- Comfortable to wear for long periods of time during OSCEs and assessments

SAFETY

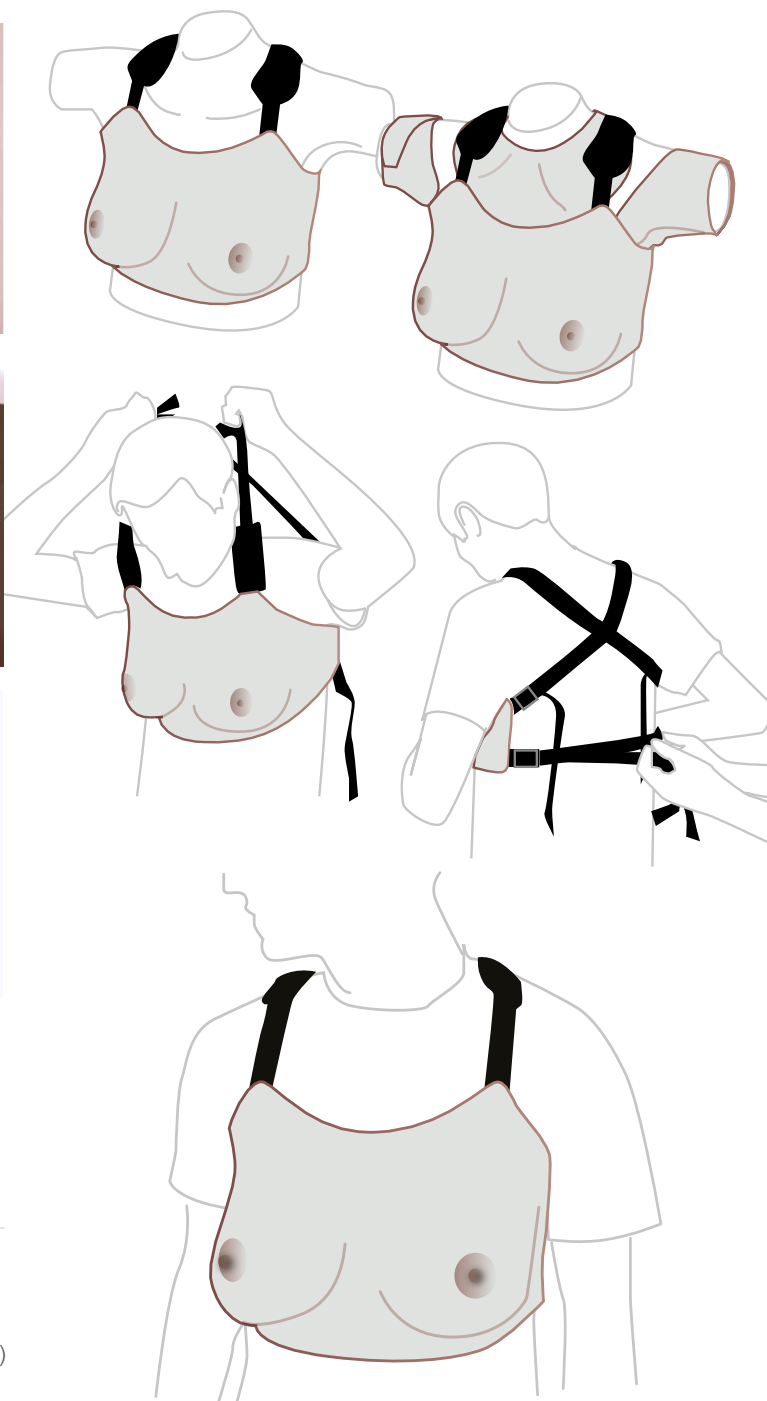
- Latex free

CLEANING & CARE

- Skin surface is washable using soap and water



- Soft tissue breasts look and feel realistic
- Pathologies fit securely into supports
- Clavicular and axilla pads for accurate lymph node placement
- Self Breast Examination training



SKILLS

- Clinical Breast Examination (CBE)
- Self Breast Examination (SBE)
- Identification of anatomical landmarks
- Identification of lymph nodes (axillary, supra & infraclavicular)
- Location and diagnosis of pathologies
- Professional-to-patient communication

WHAT'S INCLUDED

	40201	40200	40202
	41201	41200	41202
Wearable Examination Breasts	✓	✓	✓
Pathologies	✓	✓	✓
Breast Examination Inserts	✓	✓	✓
Breast Pathologies Supports	✓	✓	✓
Breast Back Plates	✓	✓	✓
Breast Examination Torso	✓	✓	x
Lymph Node Pads and Lymph Nodes	✓	x	x

OPTIONAL EXTRAS

40209 Medium Carry Case

Patents granted: • US6336812 • EP099027 • DE69804793 • CA 2293585 • ZL98806331 • HK1023832 • 755575 Australia

Male Rectal Examination Trainer - Standard & Advanced

STANDARD

60170

60186

ADVANCED

60171

60187



The Rectal Examination Trainer offers realistic, repeatable training in the core skill of digital rectal or PR examination.

Both models include a contractible anal sphincter, allowing for anal tone assessment and a fecal impaction clip in module.



The **Standard** model focuses on learning core rectal nursing procedures and excludes the pathologies.

The **Advanced** model comes with a range of prostates and 2 perineums, allowing trainees to become familiar with normal and abnormal findings and acquire key diagnostic skills.

External ano-rectal illustrations are ideal for incorporation into scenarios and **OSCE** assessments.

SKILLS

- Digital examination of the anus, rectum and prostate
- Assessment of anal tone
- Identification of fecal matter in the rectum
- Identification of external ano-rectal conditions*
- Professional-to-patient communication
- Insertion of rectal medication (micro enemas, suppositories)

QUALITIES

* *Advanced model*

ANATOMY

- Buttocks, anus, rectum, prostate and perineum
- Pathological perineum – with polyp and rectal cancer*
- 4 abnormal prostates*:
 - Benign unilateral enlarged
 - Benign bilateral enlarged
 - Unilateral carcinoma
 - Bilateral carcinoma

REALISM

- Soft, partable buttocks
- Realistic anus with resting tone and ability to contract

KEY FEATURES

- Simulation of sphincter contraction allows trainees to assess anal tone
- Interchangeable prostates can be quickly and easily inserted, out of sight of the trainee*
- Left lateral positioning
- Addition of impacted fecal matter allows trainees to recognize and distinguish this common finding
- High quality illustration pack of 9 external anal conditions

VERSATILITY

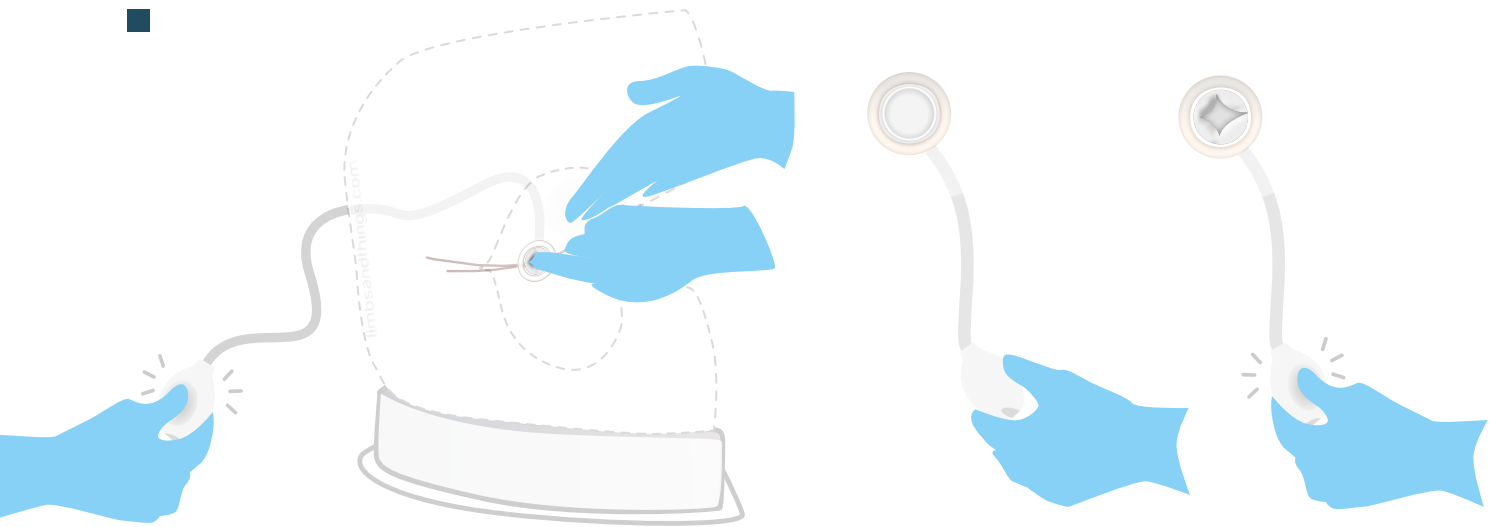
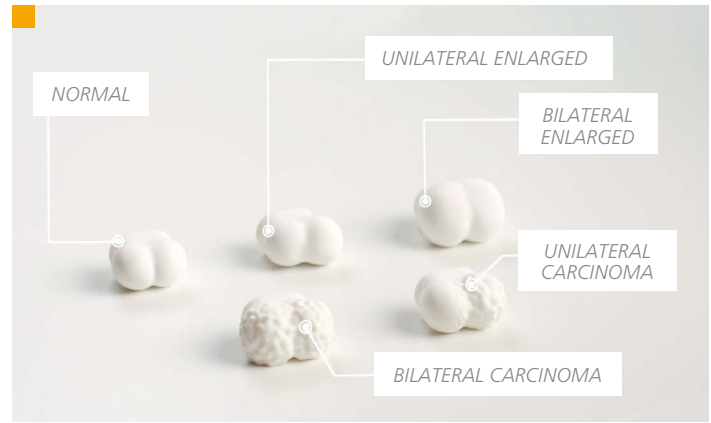
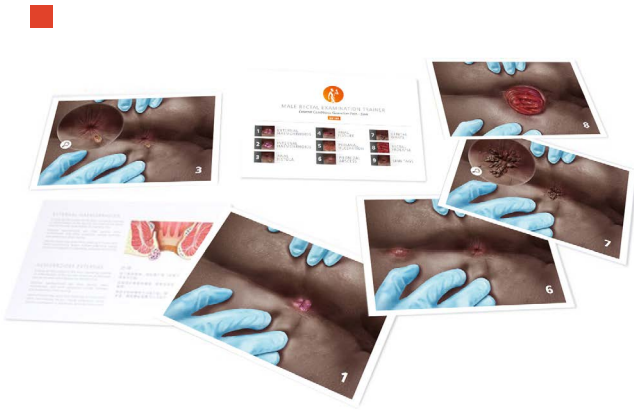
- Trainer can also be presented in 'semi-standing' position using the optional **Standing Position Stand (60172)**

SAFETY

- Latex free

CLEANING & CARE

- Skin surface is washable using soap and water



- External conditions illustration pack
- Range of prostates
- Anal tone assessment

WHAT'S INCLUDED

	60170	60171
	60186	60187
Base Unit	✓	✓
Left Lateral Stand	✓	✓
Normal Perineum with Anal Tone	✓	✓
Pathological Perineum Anal Tone	x	✓
Normal Prostate	✓	✓
Benign Unilateral Enlarged Prostate	x	✓
Benign Bilateral Enlarged Prostate	x	✓
Unilateral Carcinoma Prostate	x	✓
Bilateral Carcinoma Prostate	x	✓
Impacted Fecal Matter	✓	✓
External Conditions Illustration Pack	x	✓
Water-based Lubricant	✓	✓

OPTIONAL EXTRAS

- 60172** Standing Position Stand
- 40209** Medium Carry Case

Clinical Male Pelvic Trainer (CMPT) Mk 2 - Standard & Advanced

STANDARD

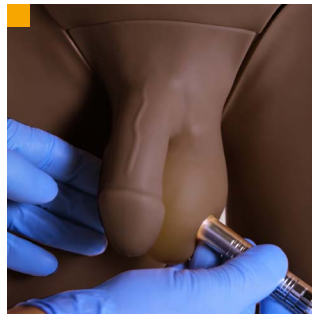
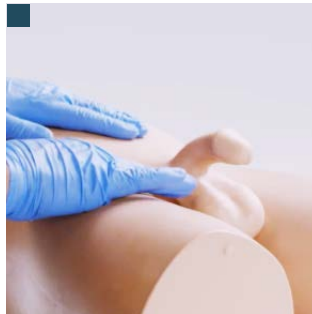
60950

60964



SKILLS

- Correct examination procedure of male pelvis
- Examination and evaluation of:
 - Normal anatomy
 - Testicular abnormalities
 - Abdominal and pelvic pain
- Dry catheterization
- Professional-to-patient communication



Realistic training experience
Penile cancer

Pelvic examination, supine position
Diagnosis of pathologies

An ideal platform for teaching and learning hands-on male pelvic examination and diagnosis.

The user-friendly design, combined with clear anatomic landmarks and a range of male conditions and pathologies creates a realistic training experience for students across all levels of healthcare education from undergraduate level upwards.



Validated in the *Journal of Surgical Education*
Volume 74, Issue 3, May–June 2017.



Developed in collaboration with:

- The Clinical Skills Resource Center, University of Liverpool, UK
- Imperial College, London, UK
- Guy's Hospital, London, UK
- Southmead Hospital, Bristol, UK
- University of Southampton, UK

QUALITIES

ANATOMY

- Abdomen, pelvis and genitalia

Anatomy of the groin with clear anatomical landmarks:

- Anterior Superior Iliac Spine (ASIS)
- Pubic symphysis and tubercles

Genitalia includes:

- Penis (both circumcised and non-circumcised)
- Scrotum (containing testicles with epididymis and vas deferens)

Pathologies (Advanced model only):

- Varicocele
- Testicular tumor and penile cancer
- Epididymal cyst
- Hydrocele
- Orchitis/Epididymo-orchitis
- Indirect inguinal hernia

REALISM

- Soft tissue genitals and abdominal wall

VERSATILITY

- Soft tissue inserts can be removed and replaced
- Can be used in 2 positions (standing and supine)

SAFETY

- Modules 5 & 7 contain latex

CLEANING & CARE

- Skin surface is washable using soap and water

ADVANCED

60951

60965



60952 | 60966

MODULE 1
Normal



60953 | 60967

MODULE 2
Varicocele



60954 | 60968

MODULE 3
Testicular Tumors & Penile Cancer



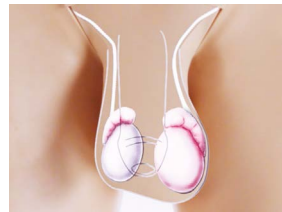
60955 | 60969

MODULE 4
Epididymal Cysts



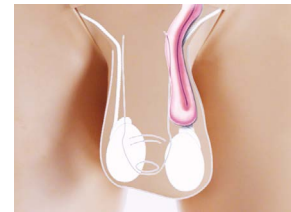
60956 | 60970

MODULE 5
Hydrocele



60957 | 60971

MODULE 6
Orchitis/Epididymo-orchitis



60958 | 60972

MODULE 7
Indirect Inguinal Hernial

WHAT'S INCLUDED

60950	60951
60964	60965

CMPT Module 1: Normal	✓	✓
CMPT Module 2: Varicocele	x	✓
CMPT Module 3: Tumors	x	✓
CMPT Module 4: Epididymal Cysts	x	✓
CMPT Module 5: Hydrocele	x	✓
CMPT Module 6: Orchitis/Epididymo-orchitis	x	✓
CMPT Module 7: Indirect Inguinal Hernia	x	✓
CMPT Abdominal Insert	✓	✓
CMPT Pubic Bone	✓	✓(x2)
CMPT Foreskins Pack (each pack contains 2 foreskins & 3 lubricant sachets)	✓	✓(x2)
Lower Torso	✓	✓
Support Base	✓	✓
LED Pen Torch	x	✓
Carry Case	✓	✓(x2)

FUNDAMENTALS OF LAPAROSCOPIC SURGERY™

Approved by the SAGES-ACS FLS Committee, the FLS trainer system is the only approved hands-on equipment for training and assessment.

FLS is a joint educational offering of the American College of Surgeons (ACS) and the Society of American Gastrointestinal and Endoscopic Surgeons (SAGES). The FLS trainer system is appropriate for learning fundamental skills needed in many laparoscopic surgery specialties, including general surgery, gynecology and urology.

The systems are complete with training box and TV camera alongside a range of tasks designed to develop the skills necessary to perform the fundamentals of laparoscopic surgery.



QUALITIES

- Skin frame constructed from durable neoprene
- 2 pre-incised holes for the trocars
- Trainer systems come with a TV camera
- Trainer design allows for ambient light to enter the training area
- Overhead LED lighting strip

SKILLS

- Laparoscopic surgery
- Tasks:
 - Peg transfer
 - Precision cutting
 - Ligating loop
 - Knot tying

FLS Trainer Box with TV Camera

50302

This product is economical and portable, making it ideal for training centres.



Visit fls-products.com for more information about a range of tasks



Note that users must provide their own TV screen

FLS Trainer System

50304

The FLS Trainer System incorporates all of the features of the FLS Trainer Box but also includes a 19" Television Screen and a Mobile SimCart.

This product offers greater flexibility and is an extremely cost effective option for training centers.



FLS All-In-One Trainer System

50306

The FLS All-In-One Trainer System incorporates all of the features of the FLS Trainer System and also includes ligating loops, sutures and an FLS Approved Instrument Kit.

This product provides a training center with everything required to run an FLS Training program.



Advanced Training in Laparoscopic Suturing (ATLAS)

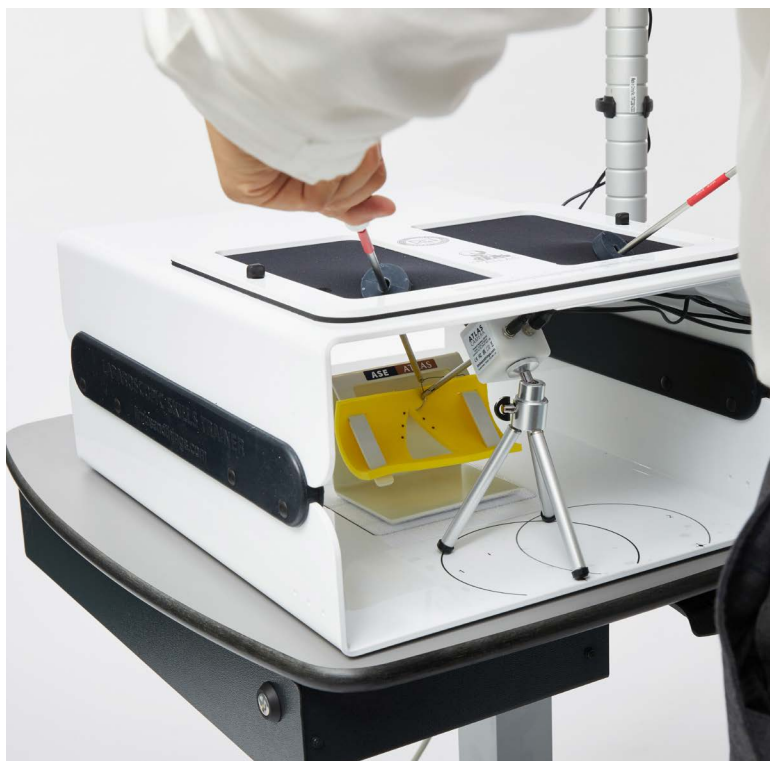
50400

The brand-new Advanced Training in Laparoscopic Suturing (ATLAS) training kit is a laparoscopic surgery simulator designed to deliver high level minimally invasive suturing training.

This unique trainer helps to prepare surgeons for all forms of laparoscopic surgery, including those where the angle of view and allowance of suturing space is more restrictive.

ATLAS facilitates six task modules that act as a benchmark for minimally invasive training and progression:

- Needle handling and positioning
- Forehand suturing
- Backhand suturing
- Confined space suturing
- Suturing under tension
- Continuous suturing



See our website for the only ATLAS approved kits for training and assessment.

Chest Drain & Needle Decompression Trainer

60230

61230



Our Chest Drain and Needle Decompression Trainer has been designed to meet the specific requirements of healthcare professionals training in surgical or guidewire-assisted thoracostomy and thoracentesis.

This product allows for a variety of chest drain insertion techniques to be performed including ultrasound-guided techniques.



QUALITIES

ANATOMY

- Representation of adult male thorax with arms raised
- Bony and soft tissue landmarks: manubriosternal joint, clavicles, ribs, pectoralis major and latissimus dorsi
- Internal ultrasound anatomy: diaphragmatic structures and collapsed lung

REALISM

- Can give the impression of breathing under ultrasound when using the advanced pad
- Needle decompression air reservoirs provide realistic release of air on insertion of needle

KEY FEATURES

- Reservoirs can be filled with fluid or mock blood to represent pleural effusion
- Bilateral chest drain and needle decompression pads

VERSATILITY

- Suitable for supine, sitting or leaning forwards positions
- Works with thoracic seals when using the standard pad
- Affordable replaceable pads

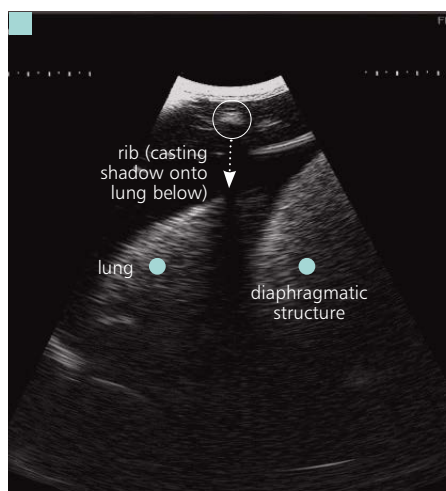
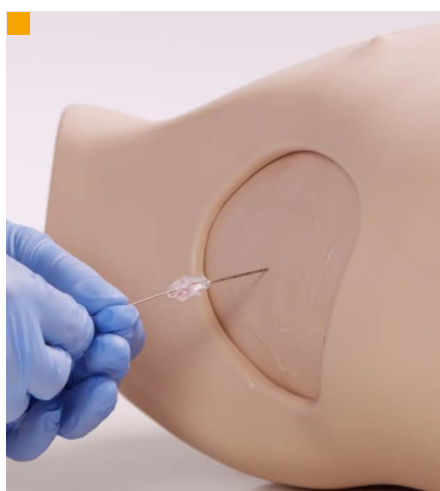
SAFETY

- Latex free

SKILLS

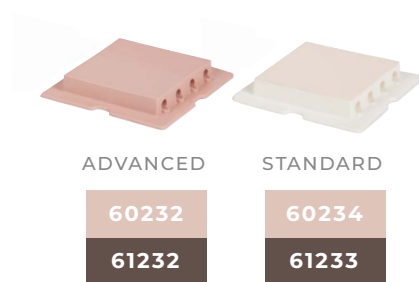
- Needle decompression of a tension pneumothorax (at both the 2nd and 5th intercostal space)
- Open, or cut-down chest drain insertion: recognition of correct position, surgical incision, blunt dissection through chest wall, perforation of pleura and finger sweep
- Suture of tube to chest wall
- Ultrasound-guided chest drain insertion (Seldinger-type), including insertion of needle under direct vision and ultrasonic recognition of chest structures
- Management of pleural effusion





- Blunt dissection
- Chest tube insertion
- Seldinger technique
- Internal anatomy visible under ultrasound
- Realistic needle decompression

PAD FEATURE COMPARISON



	ADVANCED	STANDARD
	60232	60234
	61232	61233

• Ultrasoundable	✓	×
• Use with liquids	✓	×
• Effusion	✓	×
• Hemothorax simulation	✓	×
• Pleural layer	✓	✓
• Blunt dissection	✓	✓
• Seldinger technique	✓	×
• Can be sutured	✓	✓
• Needle insertion	✓	✓
• Guidewire insertion	✓	✓
• Dilator insertion	✓	✓
• Drain tube insertion	✓	✓
• Use with adhesive dressings	✓	✓
• Shows respiratory swing	✓	×
• Latex free	✓	✓

WHAT'S INCLUDED

60230 61230

Needle Decompression Pads (x2)	
Advanced Chest Drain Pads (x2)	
Standard Chest Drain Pads (x2)	
Chest Drain Rib Frame (Left)	
Chest Drain Rib Frame (Right)	
Chest Drain Lungs (x2)	
Chest Drain Diaphragms (x2)	
Chest Drain Ribs (x12)	
Chest Drain Pump: Respiratory Swing	
Chest Drain Pump: Needle Decompression	
Chest Drain Slotted Retaining Knobs	
Key with keyring	
Torso	
Carry Case	

AirSim Advance X

TCAA91100X TCAA91100XDS



AirSim Combo X

TCCTC91100X TCCTC91100XDS



Designed to provide true, anatomically correct and visually accurate internal features to allow for airway management techniques.

Combines the uniquely constructed AirSim® airway with the enhanced addition of tracheal rings, simulated cricoid and laryngeal cartilages.

QUALITIES

ADVANCE X COMBO X

REALISM

- Real feel skin covering for added realism ✓
- Realistic features which include: palpable cricoid landmarks, laryngeal cartilages and tracheal rings to provide positive user feedback and easy identification of the sternal notch ×
- Realistic feedback during airway management procedures ✓

KEY FEATURES

- Anatomically correct nasal cavity, with important landmarks such as the turbinates clearly defined ✓
- An inflatable tongue with real-life size and texture ✓
- Optional subcutaneous fat tissue to demonstrate more difficult tracheostomy and cricothyroidotomy procedures ×
- A wraparound replaceable neck skin which facilitates up to 20 incisions thus improving efficiency ×

SKILLS

ADVANCE X COMBO X

- Double naso-tracheal intubation ✓
- Bag and mask ventilation techniques ✓
- Full range of supraglottic devices ✓
- Direct laryngoscopy ✓
- Endotracheal tube insertion ✓
- Awake fiber optic examination ✓
- Combi tube insertion ✓
- Video laryngoscopy (incl. Sellick Maneuver) ✓
- Naso gastric tube insertion techniques ×
- Needle and surgical cricothyroidotomy ×
- Percutaneous tracheostomy ×

WHAT'S INCLUDED

ADVANCE X COMBO X

- AirSim Advance X model ✓
- AirSim Combo X model ×
- Spare larynx inserts (x4) ×
- Adult lung bag set ✓
- Bottle of lubrication (100ml) ✓
- USB user manual ✓
- Carry case ✓

Clean Bleed™ Mat

70400

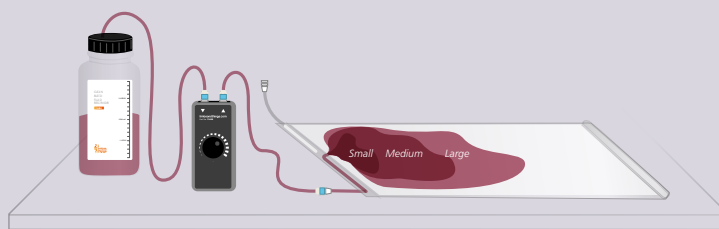
Designed to support any simulation scenario where external blood or fluid loss is a key indicator and measure of emergency interventions taken, such as gunshot wounds, post-partum hemorrhage or post-operative bleeds.



By increasing realism, we develop true to life responses.

The **Clean Bleed™ Mat** is independent of any training system and can be used alongside both simple and complex training models (as well as simulated patients) for use in simulation.

How does it work?



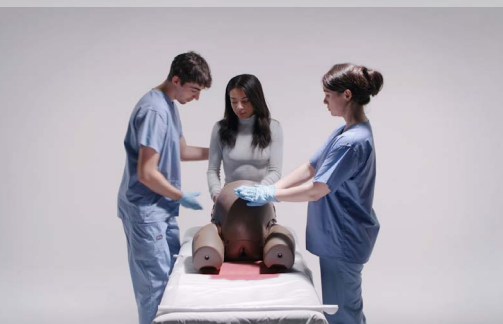
No mess
Controllable fluid flow
Easy to set up
Re-usable

DESIGNED TO SUPPORT DIFFERENT SCENARIOS

Simulated Patient



Task Trainer



Full Body Manikin



KEY FEATURES & BENEFITS

- No mess, no fuss, easy set up
- Unique sealed blood flow, heightening the realism of simulation scenarios for more accurate training
- Controllable flow of blood
- Portable and durable for use both indoors and outdoors
- Suitable for use with simulated patients, task trainers and full body manikins
- Can be used to simulate a range of fluids
- Cost effective – re-usable pads and blood save time and money

SKILLS

- Visual inspection or body assessment
- Identification and assessment of the speed and color of the bleed or flow
- Assessment of the speed and relevance of the initial trainee interventions
- Assessment of the ongoing patient condition and impact of prior interventions on the patient
- Quantify blood loss (QBL)

Available through Limbs & Things or GSA Advantage at our partners CoastEMS
GSA Contract # 47QREA21D0009 ECAT Contract # SPE2DH-22-D-0004

USA & Canada

00 1-912-629-0357

customerservice@limbsandthings.com

