



COLLES' FRACTURE REDUCTION TRAINER

Anatomically accurate, the trainer supports trainees in gaining the confidence associated with the successful management of Colles' fractures occurring at the distal end of the radius.

70250



Developed in collaboration with Dr Salwa Malik of Brighton and Sussex University Hospitals NHS Trust and Dr Yasir M. Shaukat of Surrey and Sussex Hospitals NHS Trust



An adjustable tension mechanism makes it a perfect tool for **OSCE** courses

Learning has never been more lifelike

limbsandthings.com

Post visual inspection, using the increasing levels of tension to alter difficulty, the **three key stages of the reduction (exaggeration, traction and flexion)** can be repeatedly and consistently practised, before trainees can move onto plastering.



QUALITIES

ANATOMY

- Fractured distal fragment of radius
- Head and body of the ulna

REALISM

- Realistic representation of a 'dinner-fork' deformity
- Lifelike haptic feedback when carrying out the procedure

KEY FEATURES

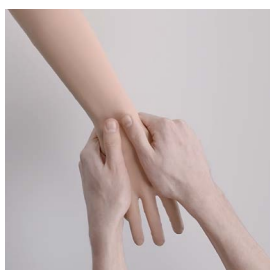
- Adjustable tension allows for progressive levels of difficulty
- Trainees can perform all three stages of reduction: exaggeration (to disimpact the fracture), traction and flexion
- Accommodates a number of plastering techniques, including: back slab, circular cast, sugar-tong splint and 3-point molds
- Variable height stand allows users to adjust the height of the model for training ease
- Replaceable hand and skin

VERSATILITY

- Trainer can be used in teams or by individuals using the stand
- Adjustable tension makes it a perfect tool for OSCE courses

SAFETY

- Latex free



International V.2 January 2022

SKILLS

- Visual inspection and identification
- Closed reduction of the fracture
- Plastering techniques
- Adjustable tension for different difficulties to be simulated
- Teamwork and communication when reducing the fracture

WHAT'S INCLUDED

- Colles' Fracture Arm (includes 70251 Hand Skin)
- Adjustable Height Stand
- Hex Key (x2) - large and small



REQUEST A QUOTE



REQUEST A DEMO



CUSTOMER SUPPORT

limbsandthings.com