



# TruNerveBlock

TruNerveBlock is a 3-in-1 learning module designed for trainee anesthetists to develop, practice and maintain the necessary skills to perform ultrasound-guided regional anesthesia and vascular access procedures.

**TCTNB100**



The model features a fractured bone structure, embedded vessels, and additional nerve bundles for regional anesthesia.

## FEATURES

### OVERVIEW

- Positive fluid flow when vessels are accurately accessed
- 1000+ needle incisions with self-healing regenerating material
- Needle tracks disappear with very minimal damage to the material
- Color doppler detection of blood flow

### VERSATILITY

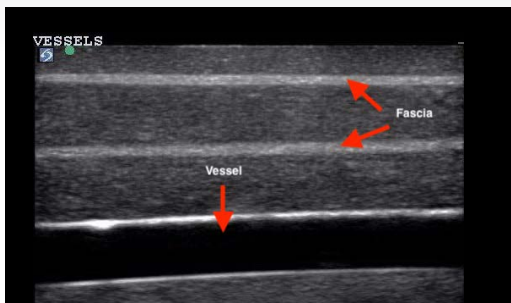
- Longitudinal and transverse anatomical viewing options
- High frequency linear array ultrasound probe can be used on the model
- Powered using USB-C or AA battery connection

### REALISM

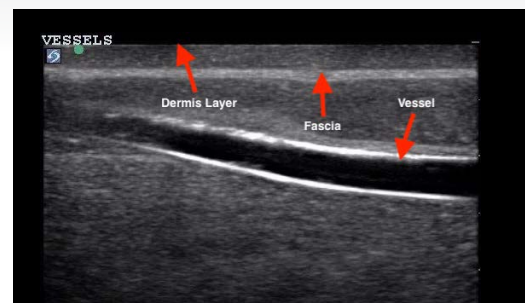
- Realistic needle tip identification and artefact
- Realistic blood flashback upon entry into the vessel
- Real feel vascular 'tenting' upon entry into the vessel
- A unique fully integrated fluid management system to replicate blood flow

### ANATOMY

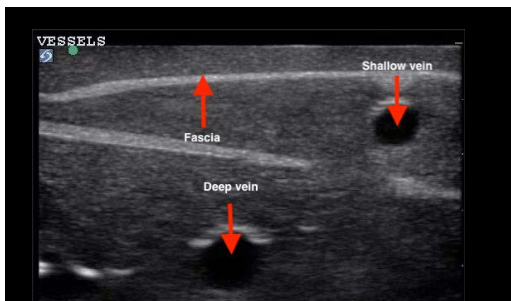
- Contains epidermal layer, two simulated vessels, a nerve bundle, a fractured bone and fascia layers



*Longitudinal view of vessels*



*Longitudinal view of vessels*



*Transverse view of vessels*



*Transverse view of embedded vessels*

## SKILLS

- Probe positioning and movement
- Recognition of arterial and vein vessels and nerves in soft responsive tissue
- Using ultrasound to target a nerve for ultrasound guided regional anaesthesia
- Ability to verify needle tip location and to practice the entire regional anaesthesia procedure
- Visualizing of the artery and vein laterally beside the nerve
- Fracture assessment detection of a fracture and diagnosing bone stress injury