

limbs&
things

**BIRTHING
SIMULATOR
PROMPT FLEX
RANGE**

Designed with, and used by leading worldwide Clinicians. The cost effective, modular nature of the **Birthing Simulator - PROMPT Flex** allows the training and practice of birthing, both normal and difficult, along with several maternal emergencies.

Used with Simulated patients, the key skill of communication can be practiced.

Multiple studies show positive outcomes through improved teamwork after a system wide commitment to enduring training.



Includes simulators for both ACOG Emergencies in Obstetric Courses (ECO) and the latest JACHO requirements

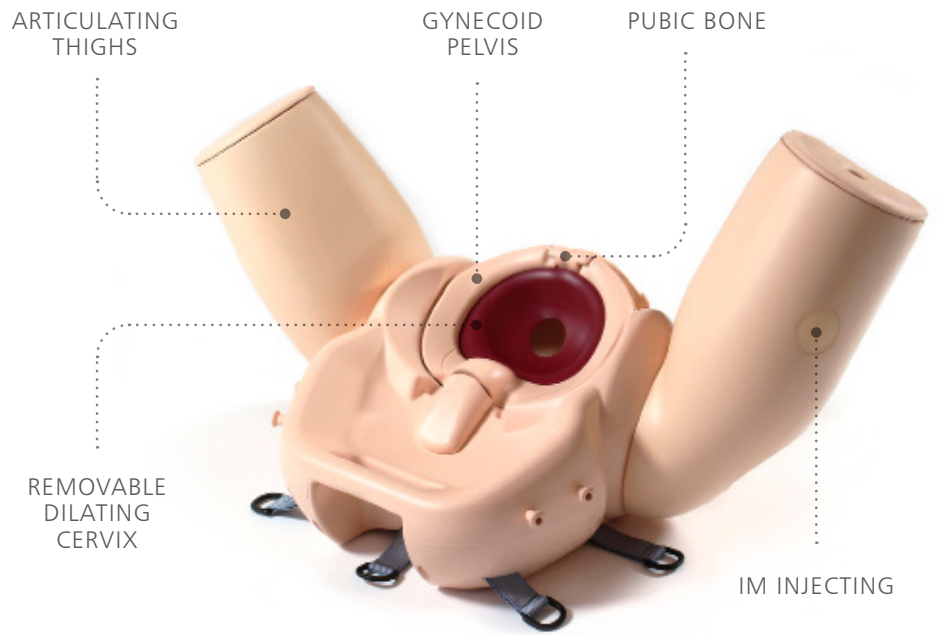


Learning has never been more lifelike

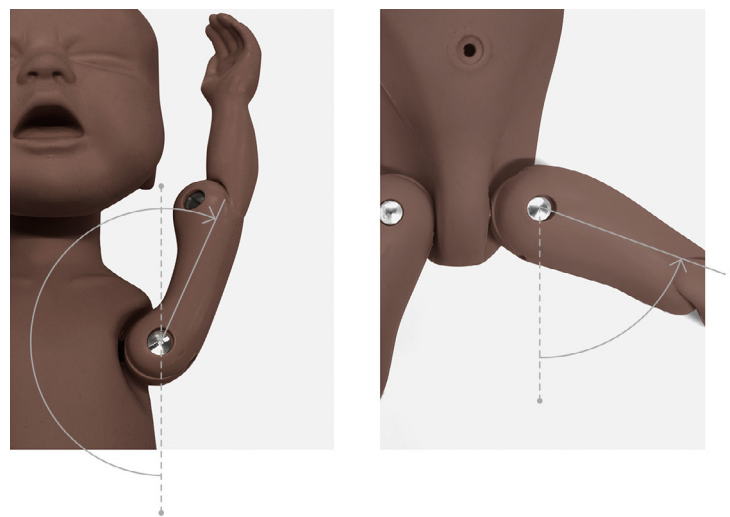
limbsandthings.com

STANDARD & ADVANCED BIRTHING SIMULATOR - PROMPT FLEX
 ARE STAND-ALONE TASK TRAINERS THAT CONTAIN A BIRTHING MOTHER &
 BABY WITH KEY ANATOMICAL FEATURES

The **Birthing Mother** features include a gynecoid pelvis, flexible birthing canal, dilating cervix, a soft realistic pelvic floor and articulating thighs.



The **Enhanced Baby** has a realistic range of articulation in the shoulder and hip joints, as well as flexion at the thoracolumbar region.



* Standard only

Birthing Simulator - PROMPT Flex - Standard

80100 80200

A modular design birthing simulator allowing for numerous training scenarios.

Used either for stand-alone training or integrated into hybrid simulation, it is an ideal training solution for all skills relating to routine and difficult deliveries.




Birthing Simulator - PROMPT Flex - Advanced

80106 80206

Incorporates wireless force monitoring where force applied to the baby's head is measured during a shoulder dystocia drill. Includes an app with inbuilt scenarios allowing monitoring and recording of force, interventions made and time taken to deliver the baby.



 Tablet not included
Download app at limbsandthings.com

QUALITIES

ANATOMY

- Birth canal and cervix
- Ischial spines and pubic bone
- Gynecoid pelvis
- Articulating thighs
- IM injecting
- Fully articulated baby with detachable umbilical cord and placenta
- Baby includes clavicles, fontanelles and flexible head

KEY FEATURES

- Improved and more realistic pelvic floor
- Articulating thighs for McRoberts procedure
- Stretchable perineum
- Soft flexible birthing canal
- Additional modules to extend learning
- Optional lower legs for extended realism
- Optional wireless force monitoring for training in shoulder dystocia management

SAFETY

- Latex free

CLEANING & CARE

- Skin is washable using soap and water

SKILLS

	80100	80106
	80200	80206
• Communication & team work skills (SP)	✓	✓
• Normal	✓	✓
• Breech	✓	✓
• Shoulder dystocia management	✓	✓
• Instrumental (forceps & vacuum devices)	✓	✓
• Delivery of placenta	✓	✓
• Cord prolapse	✓	✓
• Urinary catheter placement	✓	✓
• IM injection pads	✓	✓
• Force feedback of baby's head	×	✓
• App with scenarios & force monitoring	×	✓

	80100	80106
	80200	80206
Birthing Mother (+ Upper Legs)	✓	✓
Standard Baby	✓	×
Wireless Force Monitoring Baby	×	✓
Placenta	✓	✓
Abdomen for PROMPT Flex	✓	✓
Perineum and Birth Canal	✓	✓
Bed Straps	✓	✓
Lubricant	✓	✓
Wheeled Carry Case	✓	✓

ECOSystems with Birthing Simulator PROMPT Flex




These ECOSystems provide all the equipment required to run the American College of Obstetricians & Gynecologists **Emergencies in Obstetric Courses (ECO)**

SKILLS

- Communication and team work skills (SP)
- Shoulder dystocia
- Postpartum hemorrhage
- Umbilical cord prolapse
- Vaginal breech delivery



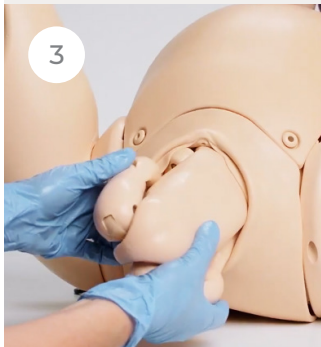

3 SIZES

The 3 ECOSystems have been designed to offer affordable and portable training for varying sizes of teaching groups from 1 to over 10 learners

ECOSystem Small	ECOSystem Intermediate	ECOSystem Large
80197 80297	80198 80298	80199 80299
1-5 learners 1 station at a time	5-10 learners 2 stations at a time	+10 learners 4 stations at a time
		

5 STATIONS

There are 5 teaching stations in total for ECO (5th being communication). Each ECOSystem provides all the equipment needed.

Shoulder Dystocia	Postpartum Hemorrhage	Breech Presentation	Umbilical Cord Prolapse
			

WHAT'S INCLUDED	80197	80198	80199
	80297	80298	80299
Birthing Simulator - PROMPT Flex - Standard	x	✓	✓ (x2)
Birthing Simulator - PROMPT Flex - Advanced	✓	✓	✓
Postpartum Hemorrhage Kit - PROMPT Flex	✓	✓	✓
Birthing Mother - PROMPT Flex	x	x	✓
Abdomen - PROMPT Flex - Standard/Advanced	x	✓	✓
Piper Forceps	✓	✓	✓

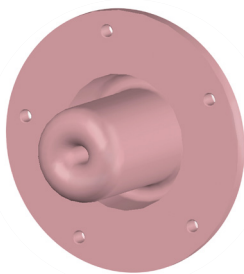
Cervical Cerclage Module - PROMPT Flex

80180

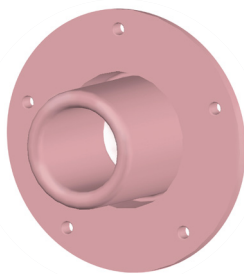
80280

This module is the ideal tool to support obstetric trainees to develop the skills of elective and emergency cervical cerclage.

The easy to use design offers realistic movement of the cervix down the vaginal vault, enabling trainees to place the cerclage as high up the cervix as possible, which supports the learning of the McDonald technique.



ELECTIVE



EMERGENCY

Cervical Dilatation & Effacement Module - PROMPT Flex

80102

80202

This is a complete training solution for the assessment and scoring of cervical dilatation in the latent and active stages of labor.

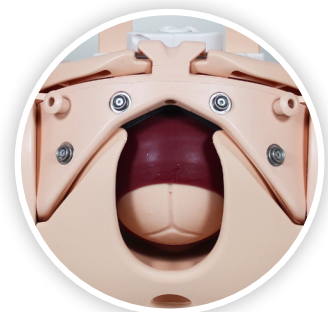
For comprehensive training, 6 interchangeable cervixes (ranging from 1-10cm) and amniotic membranes have been designed to represent realistic dilatation and effacement of the cervix.



FETAL STATION
(-3 TO +3)



CERVICAL DILATION
(1-10CM)



Enhanced Cesarean Section Module (ECSM) - PROMPT Flex

80300

80400

Ideal for practicing the necessary skills required when performing both routine and complex cesarean section. Trainees can have exposure to delivering a difficult baby such as an impacted fetal head (IFH), or a transverse lie.

A pre-incised abdomen allows for repeated delivery practice to help improve confidence and familiarity of maneuvers.



QUALITIES

REALISM

- Abdominal skin has realistic appearance, fat layer and feel of at-term abdomen
- Realistic feel of uterus interior during delivery
- Head and shoulders present at realistic level in relation to the uterine incision

KEY FEATURES

- Uterus holds baby firmly in position for cephalic, breech and transverse presentations
- Fundal pressure can be applied to aid delivery of the baby for IFH maneuvers
- Pre-incised skin allows easy repeat delivery practice
- Realistically mimics the restrictive space of the pelvic inlet for IFH maneuvers
- Accommodates retraction using metal, plastic or rubber retractors

VERSATILITY

- Allows for training in routine and complex caesarean section at full dilation

SAFETY

- Latex free



The module can be used to practice any of the following methods of delivering a deeply impacted fetal head:

- Manual cephalic extraction maneuvers
- Vaginal push up
- Reverse breech extraction (pull technique)
- Patwardhan's technique
- Use of a fetal pillow



SKILLS

- Cephalic and breech delivery
- C-section at full dilation:
 - Head disimpaction using vaginal push methods
 - Use of balloon disimpacting device
 - Reverse breech extraction
 - Patwardhan's techniques
- Transverse lie
- Instrument assisted C-section delivery
- Delivery of the placenta for routine c-sections
- Teamwork and human factors training in emergency C-section

WHAT'S INCLUDED

80300

80400

Perineum
Uterus for Cesarean Section Module
Impacted Fetal Head Uterus
Pre-incised Delivery Skin
Cervix for Cesarean Section Module
Foam Uterus Support
Pelvic Floor

Maternal Hemorrhage Simulator - PROMPT Flex

80190

80290

This kit includes a PROMPT Flex birthing mother, an abdomen and Concentrated Venous blood, as well as a container. This allows for the creation of multiple simulated post-partum training scenarios, and is an ideal training solution for the skills related to effectively managing a post-partum hemorrhage. The maternal hemorrhage simulator may be used for hybrid simulation as well as stand-alone bench top training.

In line with the Joint Commission requirement that all **JCAHO** accredited facilities will conduct maternal safety insitu training, including that of Postpartum Hemorrhage, the Maternal Hemorrhage kit has been created for effective identification and management of PPH with an atonic and contracting uterus. The new standards released by the Joint Commission address the most common findings that lead to poor outcomes for women.



SKILLS

- Management of postpartum bleeding:
 - Fundal massage
 - Bi-manual compression
 - Hemostatic balloon insertion and management
- Communication skills with the mother when used with a standardized patient
- Intramuscular injection
- Estimation of blood loss

QUALITIES

ANATOMY

- Anatomically accurate representation of mother with postpartum bleeding
- Realistic feel of fundal massage and bi-manual compression

REALISM

- Realistic simulation of atonic and contracting uterus
- Anatomically accurate mother
- Ability to give intramuscular injection
- Realistic blood loss volume

KEY FEATURES

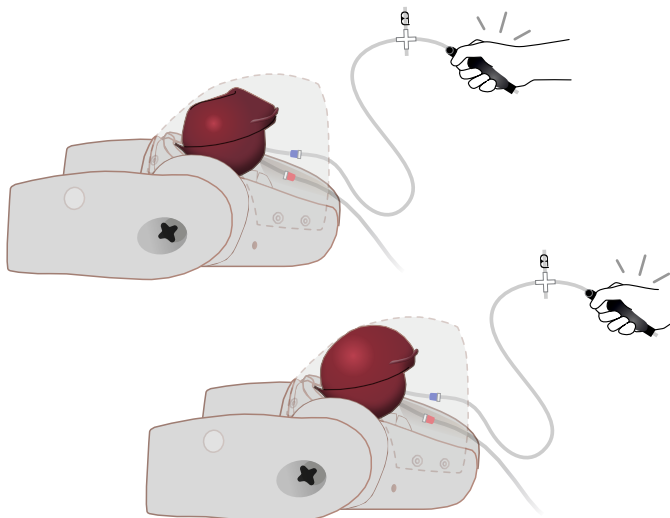
- Blood loss of up to 2 liters can be simulated
- Air bulbs are used to stimulate blood flow and control atonic state of the uterus

VERSATILITY

- Use in training room or in situ as team training or with a standardized patient

SAFETY

- Latex free



WHAT'S INCLUDED

80190

80290

Postpartum Hemorrhage Module - PROMPT Flex
Birthing Mother - PROMPT Flex - Standard/Advanced
Abdomen - PROMPT Flex - Standard/Advanced

Using PROMPT in conjunction with effective professional training, reports show:



- 50% Reduction on brain injury
- 45% Reduction in school-aged cerebral palsy
- Reduction in maternal deaths

Source: <https://www.promptmaternity.org/publications>



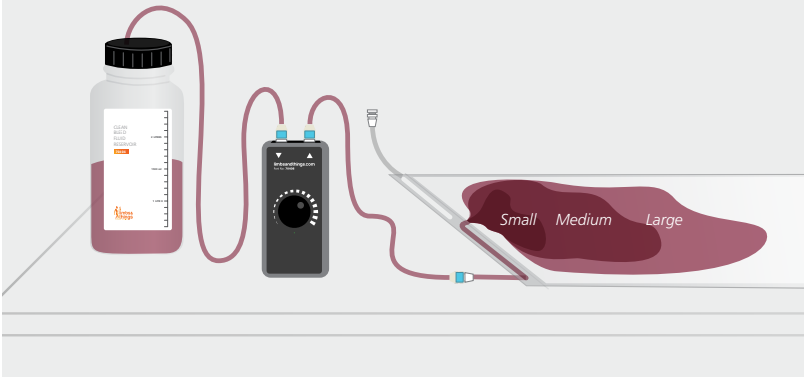
PROMPT Flex is suitable for use on Obstetric Training Programs including:

ACOG Course – ECO (Emergencies in Clinical Obstetrics)	Care Team OB (American Academy of Family Physicians)
ALARM (Advances in Labor and Risk Management) - Canada	PROMPT (PRactical Obstetric Multi Professional Training)
ALSO (Advanced Life Support in Obstetrics)	TeamSTEPPS (Team Strategies and Tools to Enhance Performance and Patient Safety)
BLSO (Basic Life Support in Obstetrics)	

YOU MAY ALSO BE INTERESTED IN **CLEAN BLEED™ MAT**

70400

This easy to setup and mess free product has the ability to create the impression of hemorrhages such as postpartum through a controlled flow into a sealed mat.



USA V.10 Nov 2021



REQUEST A QUOTE



REQUEST A DEMO



BUY ONLINE



CUSTOMER SUPPORT

Limbs & Things Inc.

P.O. Box 15669, Savannah, GA 31416, USA
E: customerservice@limbsandthings.com
T: (912) 629-0357

limbsandthings.com