

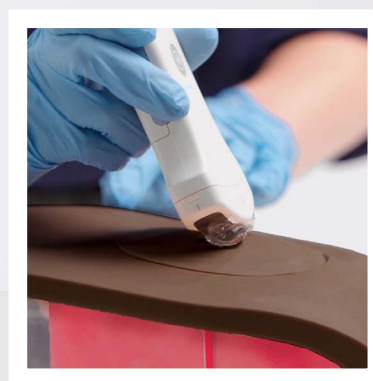
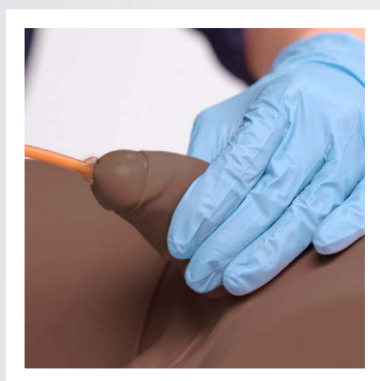


CATHETERISATION TRAINER RANGE

The Catheterisation Range facilitates the teaching of urethral and suprapubic catheterisation across all levels of training.

Interchangeable modules allow practice of the fundamental procedures of male and female urethral catheterisation, as well as more advanced skills of suprapubic management and ultrasound guided insertion.

60850	60870	MALE CATHETERISATION TRAINER
60851	60869	FEMALE CATHETERISATION TRAINER
60852	60873	SUPRAPUBIC INSERTION (ULTRASOUND GUIDED) UNIT



Learning has never been more lifelike

limbsandthings.com



The anatomically accurate trainers include a supple urethra and resistant sphincter providing a closer to life training experience.

The ability to view catheter path gives trainees and teachers real time feedback on the location and progress of the procedure.

60850 60870 MALE CATHETERISATION TRAINER



The male trainer has soft and compliant genitalia to enhance the realistic experience of catheter insertion.

Replaceable & removable foreskin.



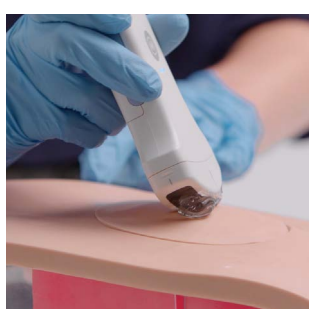
60851 60869 FEMALE CATHETERISATION TRAINER



The female trainer has soft labia allowing trainees to practise parting using the aseptic no touch technique, as well as management and care of a pre-inserted suprapubic catheter via the pre-reported bung.



60852 60873 SUPRAPUBIC INSERTION (ULTRASOUND GUIDED) UNIT



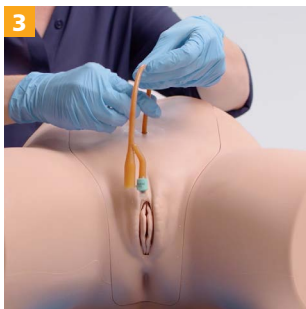
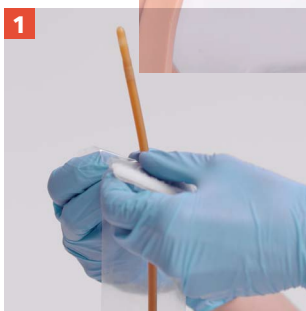
Optional module, designed for advanced skills training, allowing trainees to master ultrasound guided suprapubic catheterisation insertion.

Fits into 60850/6070 & 60851/60869



SKILLS

- Correct handling of male and female anatomy
- Aseptic catheterisation technique
- Withdrawal of catheter
- Urinary catheterisation
- Suprapubic catheter management - Female module
- Suprapubic catheter insertion (blind and ultrasound guided)*
- Ultrasound bladder scanning on a full bladder*
- Fluid management



- Aseptic catheterisation technique
- Ability to view catheter path when module used without pelvic shell
- Suprapubic management
- Suprapubic catheter insertion

QUALITIES

REALISM

- Supple urethra & resistant sphincter providing realistic response
- Flaccid penis and removable foreskin
- Vaginal opening and realistic urethral meatus
- Anatomically accurate bladder

KEY FEATURES

- Ability to assess the students progress
- Ultrasound compatible*
- Easy to set-up
- Non-drip valve
- Modular

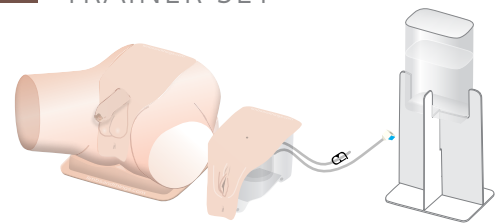
VERSATILITY

- Easily interchangeable male, female and suprapubic catheterisation modules
- Removable foreskin

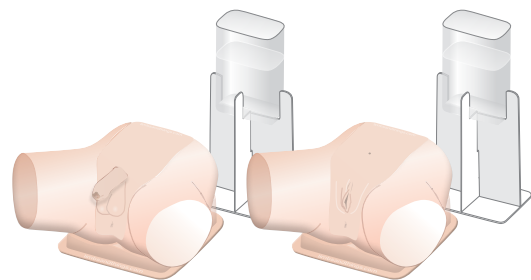
SAFETY

- Trainer is latex free (catheters provided contain latex)

60853 STANDARD CATHETERISATION TRAINER SET



60854 ADVANCED CATHETERISATION TRAINER SET



WHAT'S INCLUDED

	60850	60851	60852	60853	60854
	60870	60869	60873	60871	60872

Male Catheterisation Module	✓	×	×	✓	✓
Female Catheterisation Module	×	✓	×	✓	✓
Suprapubic (Ultrasound) Catheterisation Module	×	×	✓	×	×
Suprapubic Insertion Bungs (x2)	×	×	✓	×	×
Catheterisation Foreskins (x3)	✓	×	×	✓	✓
Aseptic Catheterisation Sleeves (x2)	✓	✓	×	✓	✓(x2)
Water System	✓	✓	✓	✓	✓(x2)
Pelvic Shell & Stand	✓	✓	×	✓	✓(x2)
Water Extension Tubing	✓	✓	×	✓	✓(x2)
Limbs & Things Lubricant	✓	✓	×	✓	✓(x2)
Antifungal Agent (Milton Sterilising Fluid)	✓	✓	✓	✓	✓(x2)
14 French Foley Catheter	✓	✓	×	✓	✓(x2)
Plastic Kidney Dish	✓	✓	×	✓	✓(x2)



Suprapubic catheter insertion (ultrasound guided)

CURRICULUM REFERENCES

UNDERGRADUATE MEDICINE

Undergraduate Medicine - Medical Deans' Competencies Report, Medical Graduate Competency Framework Stage 2 Final Report, 2012, p. 9.

UNDERGRADUATE NURSING

Undergraduate Nursing - ACI Urology Network, 2013.

JUNIOR DOCTORS

CPMEC Australia Curriculum Framework for Junior Doctors: Skills and Procedure, 2006, p. 2..

PARAMEDICS

Paramedics Australasia: Paramedicine roles: General Care Paramedic, 2018.

SPECIALIST GP TRAINEES

RACGP Curriculum for Australian General Practice, Men's Health, 2011, p.143.

AUS V.3 Jan 2022



REQUEST A QUOTE



REQUEST A DEMO



BUY ONLINE



CUSTOMER SUPPORT

limbsandthings.com