



USER GUIDE



ELBOW FOR JOINT INJECTION

30080



FOR MORE SKILLS TRAINING PRODUCTS VISIT

limbsandthings.com

Elbow for Joint Injection

30080

For practising soft tissue joint injection used for the treatment of injuries and arthritis. The arm is presented for the treatment of both Golfer's and Tennis elbow.

Skills

- Patient posture and management
- Palpation techniques
- Identifying anatomical landmarks and painful areas
- Injections for: Tennis Elbow (lateral epicondylitis), Golfer's Elbow (medial epicondylitis)
- Training in fan or cone infiltration techniques

Features

- Flexed right elbow, which rotates on the stand
- Easy-to-use Feedback Console illuminates:
 - when the correct pressure pain points are found
 - when needle is correctly placed into the injection sites
 - if needle enters ulnar nerve lying behind medial epicondyle
- Supplied with 'No Trace' marker (non-permanent rapidly fading ink) for illustrating underlying anatomical landmarks

Package supplied

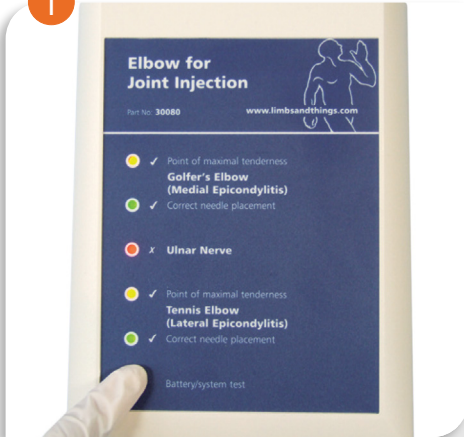
- **30023 'No-Trace' Marker**
- **30093 Elbow Needle Set**
- **Elbow for Joint Injection**
- **Feedback Console with batteries**
- **Carry case**

Safety instructions

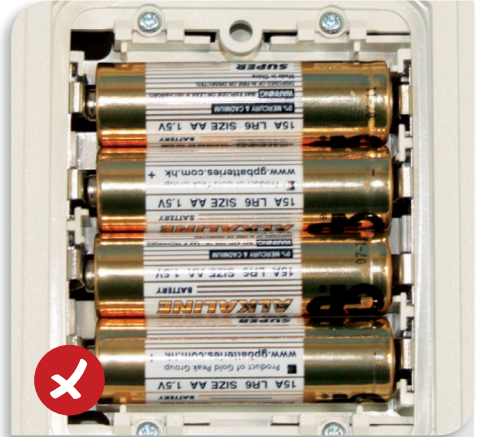
- The product must be used indoors
- The product is not a toy and must not be used by children or untrained staff
- The product must be used by appropriately trained adults only

Battery test procedure

1



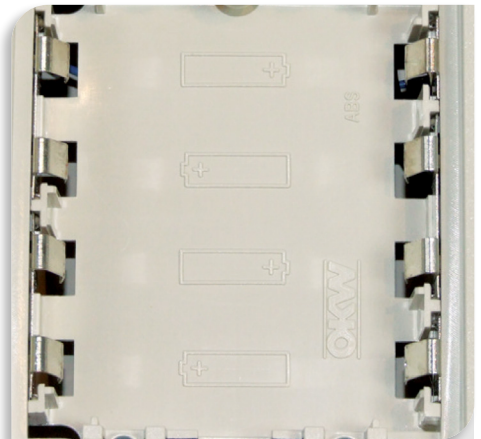
Before connecting any electrical leads, firmly press the 'Battery/system test' button on the front panel of the Feedback Console. All the lights should illuminate



If they do not: check that there are batteries inserted (4x 1.5V AA/ LR6/ AM3/ MN1500). Alkaline batteries are recommended. Observe any safety information printed on the batteries



If batteries are inserted make sure they are the correct way round



A polarity diagram is moulded into the plastic underneath the batteries.

If the batteries are inserted correctly and the lights still do not illuminate, remove them and insert batteries that are known to be working

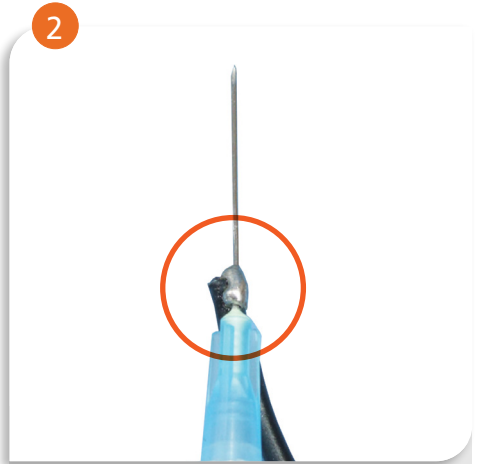
If the Console fails to work after carrying out this recommended procedure, it has probably developed a fault and should be returned.

NOTE: Batteries should be removed from the Feedback Console if the product is not being used for an extended period of time.

Connecting the leads



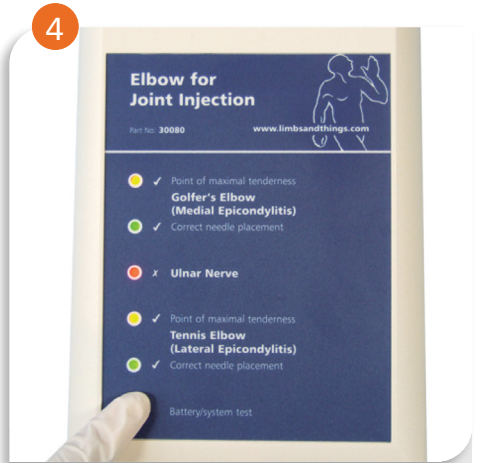
Having satisfied out the Battery Test Procedure, ensure that the lead running from the model is plugged into the black socket at the back of the Feedback Console



Ensure that the electrical contact is securely attached to the needle on the syringe



Ensure the lead running from the syringe is plugged into the circular socket at the back of the Feedback Console



Press the 'Battery/system test' button at the bottom of the front panel of the Feedback Console. All the lights should illuminate

Should the lights fail to come on, disconnect and reconnect the leads at the back of the Feedback Console. If the lights do not illuminate after doing this then the model has probably developed a fault and should be returned.

Simulation of injection

Before use, check that the needle is not blocked and that the tip of the needle is sharp and straight.
Blunt or hooked needles may tear the skin or prevent correct electrical contact



✓ Point of maximal tenderness
**Golfer's Elbow
(Medial Epicondylitis)**

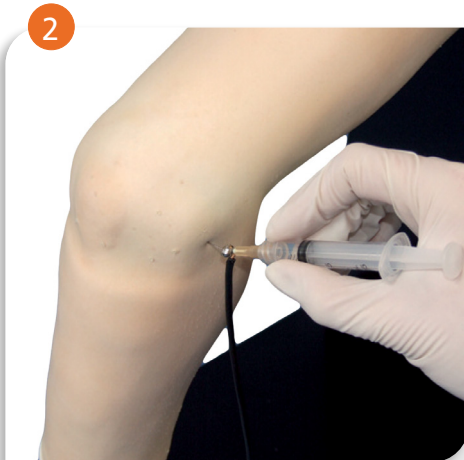
✓ Correct needle placement

✗ **Ulnar Nerve**

✓ Point of maximal tenderness
**Tennis Elbow
(Lateral Epicondylitis)**

✓ Correct needle placement

A point of maximal tenderness can first be identified with firm, precise pressure over either epicondyle whereupon a yellow light will illuminate



✓ Point of maximal tenderness
**Golfer's Elbow
(Medial Epicondylitis)**

✓ Correct needle placement

✗ **Ulnar Nerve**

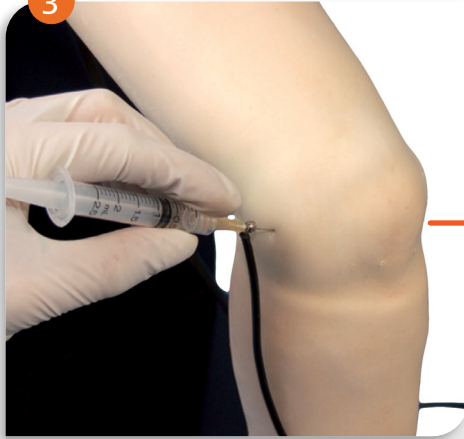
✓ Point of maximal tenderness
**Tennis Elbow
(Lateral Epicondylitis)**

✓ Correct needle placement

When the needle enters the correct injection sites for Tennis Elbow or Golfers Elbow, a green light will illuminate. Correct injection technique can then be taught.

Simulation of injection

3



✓ Point of maximal tenderness
**Golfer's Elbow
(Medial Epicondylitis)**

✓ Correct needle placement

✗ **Ulnar Nerve**

✓ Point of maximal tenderness
**Tennis Elbow
(Lateral Epicondylitis)**

✓ Correct needle placement

A red light will illuminate if the needle enters the ulnar nerve which lies behind the medial epicondyle (Golfer's Elbow)

OTHER PRODUCTS IN OUR JOINT INJECTION RANGE

SHOULDER INJECTION TRAINER RANGE

PALPATION GUIDED

70200

70219



ULTRASOUND GUIDED

70202

70221



HAND & WRIST INJECTION TRAINER

70230



FOOT & ANKLE FOR JOINT INJECTION

30100



OTHER PRODUCTS IN OUR JOINT INJECTION RANGE

KNEE ASPIRATION & INJECTION TRAINER
WITH ULTRASOUND CAPABILITIES

70103

70114

