



ULTRASOUND TRAINING RANGE

Each product has been designed to allow students to become confident in interpreting ultrasound images as they conduct their ultrasound guided procedural training. The trainers can be used in-situ or within classroom settings to develop skills and confidence.

For the full range of products please visit limbsandthings.com



Learning has never been more lifelike

limbsandthings.com

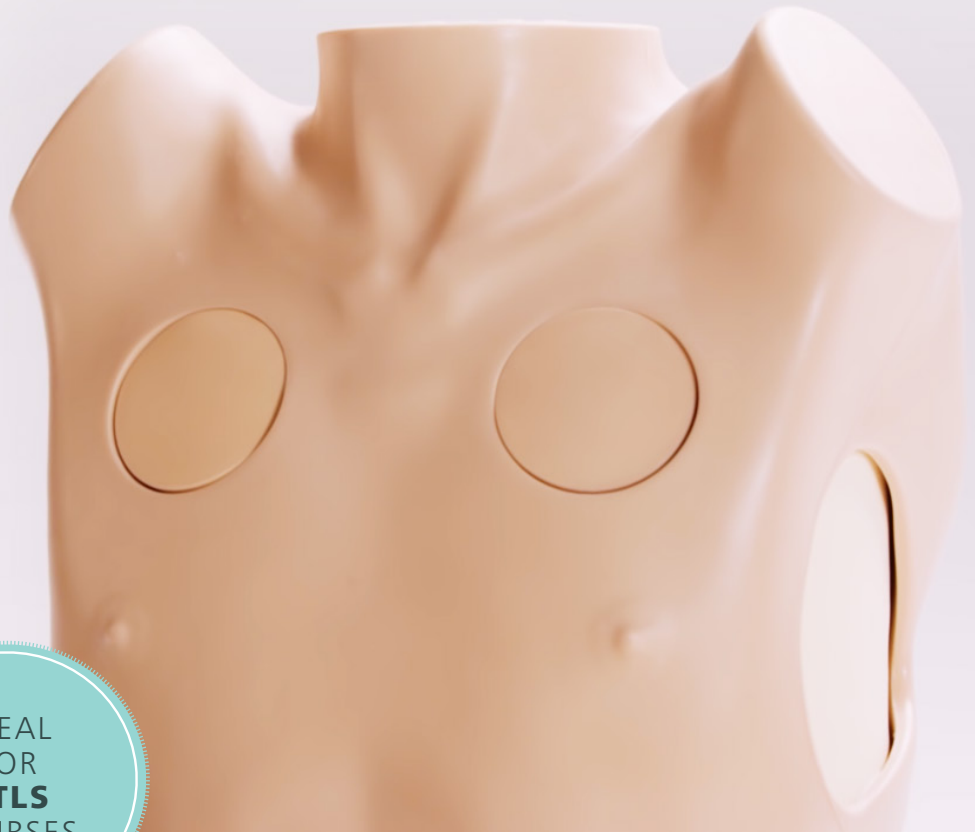
CHEST DRAIN & NEEDLE DECOMPRESSION TRAINER

60230

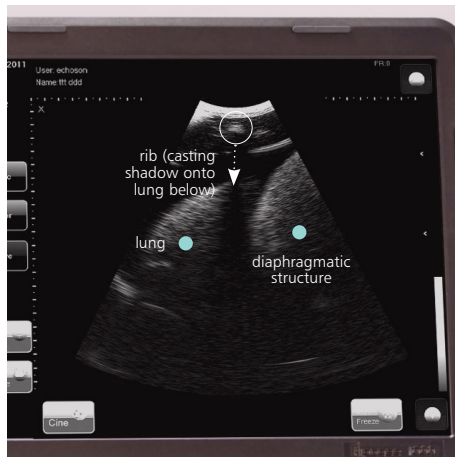
61230

Our Chest Drain and Needle Decompression Trainer has been designed to meet the specific requirements of healthcare professionals training in surgical or guidewire-assisted thoracostomy and thoracentesis.

This product allows for a variety of chest drain insertion techniques to be performed including ultrasound-guided techniques.



IDEAL FOR **ATLS** COURSES



ULTRASOUND EPIDURAL & LUMBAR PUNCTURE MODEL

61002

61025

For more advanced learning needs, the trainer allows for acquisition of ultrasound guided skills techniques in the injection of local anaesthetics, lumbar puncture, collection and measurement of CSF, and epidural administration.



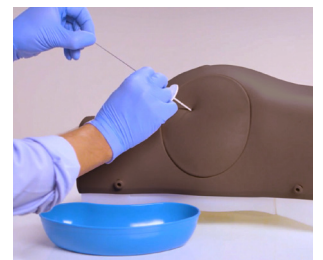
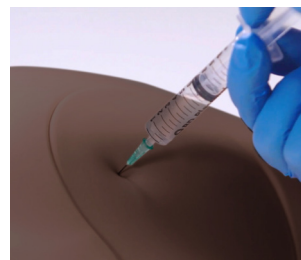
PARACENTESIS TRAINER

60100

60111

This trainer fulfills the fundamental component of core medical training in diagnostic and therapeutic techniques of paracentesis. Both landmark and ultrasound guided techniques can be practised.

Trainees are able to identify the echogenic anatomy enabling them to learn how to safely insert a needle or catheter into the peritoneal cavity.

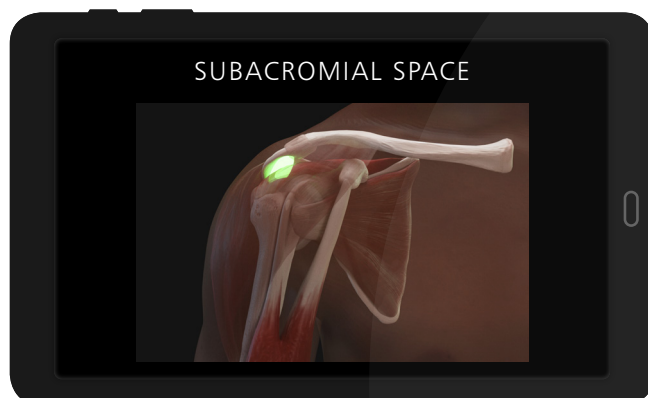
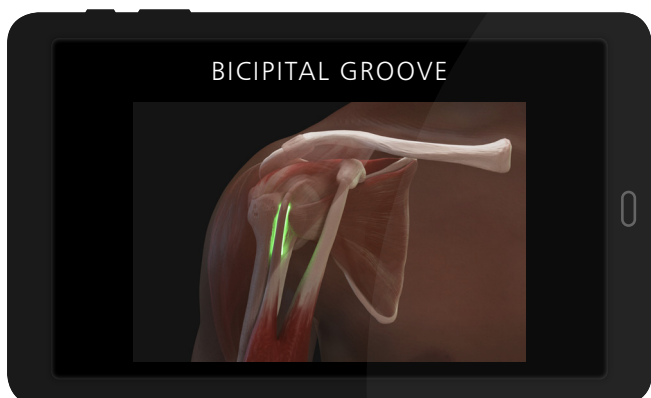
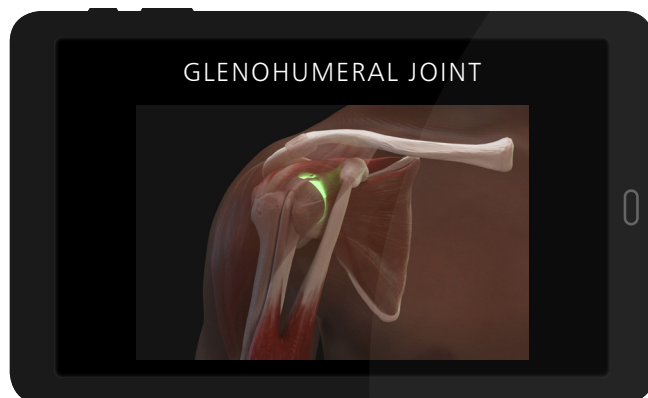
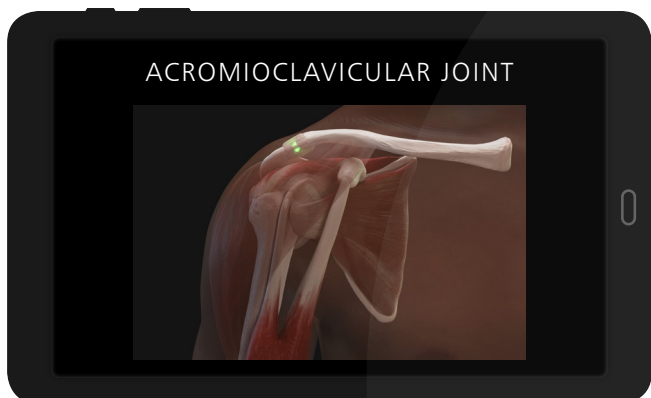


SHOULDER INJECTION TRAINER - ULTRASOUND GUIDED

70202

70221

Allowing trainees to acquire the key skills in locating, injecting and aspirating the 4 most commonly treated shoulder sites: glenohumeral joint, subacromial space, acromioclavicular joint, bicipital groove.



KNEE ASPIRATION & INJECTION TRAINER WITH ULTRASOUND CAPABILITY

70103

70114

An anatomically accurate adult knee model for aspiration of synovial fluid and joint injection from both the lateral and medial aspects, using ultrasound-guidance or palpation.

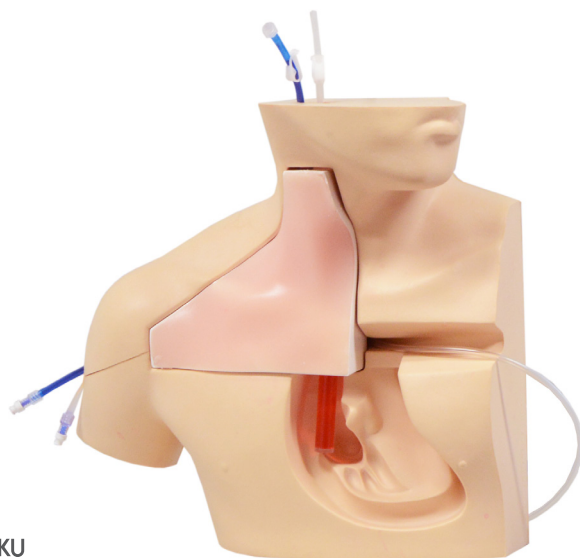
The robust sealed knee includes knee joint, patella, patellar tendon and the suprapatellar space.



ULTRASOUND CENTRAL VENOUS CATHETER INSERTION SIMULATOR MK 3

KKM93C

A realistic model for teaching central line management including cannula approaches, and the insertion of central venous catheters into the superior vena cava, with and without ultrasound guidance.



 KYOTO KAGAKU



ULTRASOUND GUIDED PICC TRAINING

KKMW18

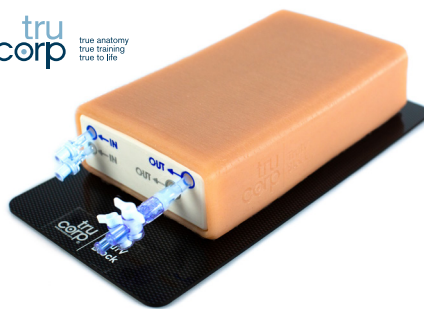


KYOTO KAGAKU

TRUIV BLOCK

TCTIV100

tru corp
true anatomy
true training
true to life



ULTRASOUND VASCULAR ACCESS TRAINER

60530



TRUNERVE BLOCK

TCTNB100

tru corp
true anatomy
true training
true to life



ULTRASOUND GUIDED PERICARDIOCENTESIS

KKMW15



ULTRASOUND GUIDED THORACENTESIS

KKMW4



SUPRAPUBIC INSERTION UNIT

60852

60873



PAEDIATRIC FAST

KKUS-8



SONON ULTRASOUND IMAGING SYSTEM

HC-300C CONVEX

HC-300L LINEAR



UK V.1 May 2021



REQUEST A QUOTE



REQUEST A DEMO



BUY ONLINE



CUSTOMER SUPPORT

limbsandthings.com