



KNEE ASPIRATION & INJECTION TRAINER WITH ULTRASOUND CAPABILITIES

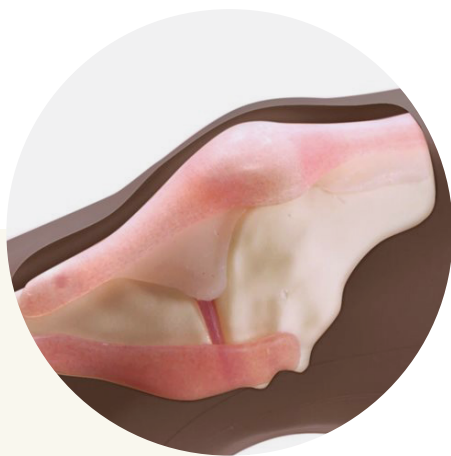
An anatomically accurate adult knee model for aspiration of synovial fluid and joint injection from both the lateral and medial aspects, using ultrasound-guidance or palpation.

The robust sealed knee includes knee joint, patella, patellar tendon and the suprapatellar space.

70103 LIGHT

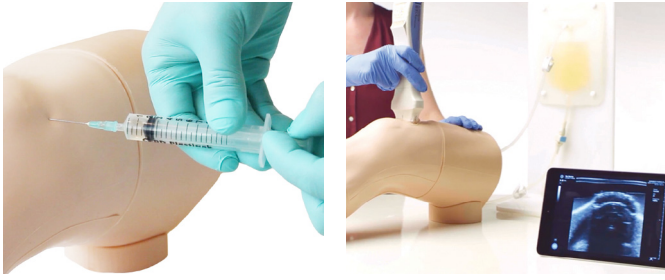
70114 DARK

Key anatomical landmarks are realistic to palpate, enabling injection and aspiration aim to be practised, and accuracy improved. Discrete muscle, skin and fat layers, provide realistic tissue and needle response.



Learning has never been more lifelike

limbsandthings.com



QUALITIES

REALISM

- Discrete muscle and skin layers provide realistic tissue and needle response
- Anatomically accurate synovial sac and palpable patella
- Realistic color and consistency of synovial fluid

KEY FEATURES

- 1000+ stabs per module with 21 gauge needle
- Precise, palpable anatomy with bony landmarks
- Robust, sealed knee unit that holds all anatomy
- Key internal landmarks visible under ultrasound
- Compatible with all standard ultrasound machines
- Echolucent material allows aspiration and injection under ultrasound-guidance
- Suitable for undergraduate and postgraduate medical study
- Knee skin is watertight

VERSATILITY

- Caters for ultrasound-guided technique as well as palpation
- Can be used with leg supports for supine position, or without leg supports for side of bed position
- Separate Fluid Bag & Stand ensure the model is easy to use and mobile
- Clear indicator on fluid bag to prevent overfilling

SAFETY

- Latex free

CURRICULUM REFERENCES

FAMILY MEDICINE

AAFP Residency Guidelines, Musculoskeletal and Sports Medicine, Reprint No. 265; p. 4

RHEUMATOLOGY

Core Curriculum Outline for Rheumatology Fellowship Programs, American College of Rheumatology, 2015

UNDERGRADUATE MEDICINE

Association of American Medical Colleges: Recommendations for Clinical Skills Curricula for Undergraduate Medical Education, Appendix B; p. 23

POSTGRADUATE NURSING

Adult-Gerontology Acute Care And Primary Care NP Competencies 2016, p. 42

PHYSICIAN ASSISTANT

Nurse Practitioner (NP) and Physician Assistant (PA) Rheumatology Curriculum Outline, American College of Rheumatology (ACR) and Association of Rheumatology Health Professionals (ARHP), 2017, p.8

ANATOMY

The following key anatomical landmarks are realistic to palpate:

- Skin
- Subcutaneous fat, quadriceps tendon & patellar ligament
- Prefemoral, suprapatellar & Hoffa (infrapatellar) fat pad
- Femur
- Medial & lateral collateral ligament
- Tibia
- Patella
- Joint space & synovial recess
- Meniscus
- Muscle mass of quadriceps

SKILLS

- Injection into joint cavity
- Aspiration of synovial fluid from both the lateral and medial aspects
- Competence using ultrasound technology to perform systematic scanning techniques and examination of the knee joint
- Identification of anatomical landmarks using ultrasound guidance or the palpation method
- Patient positioning and management
- Recognition of joint effusion
- Ballottement

WHAT'S INCLUDED

70103

70114

- Ultrasound Knee Module for Aspiration & Injection
- Fluid Bag and Stand
- Synovial Fluid (including Syringe)
- Needle Set – 3 Green Needles, 1 Syringe, 1 Sharps Bin
- Leg unit, including removable supports
- Carry case

USA V.2 Mar 2021



REQUEST A QUOTE



REQUEST A DEMO



BUY ONLINE



CUSTOMER SUPPORT

limbsandthings.com