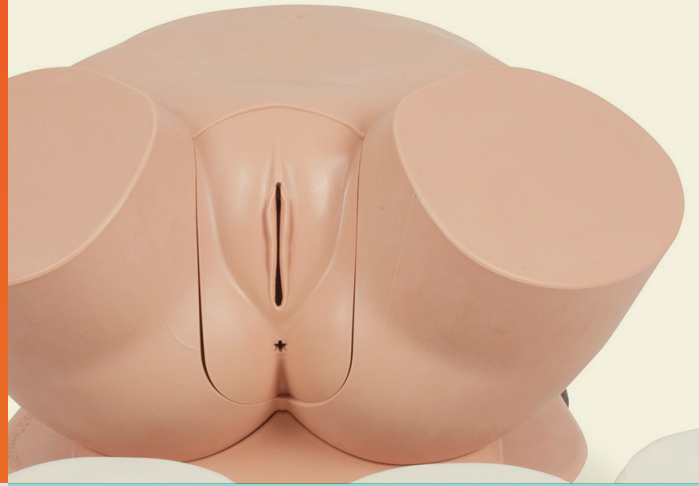


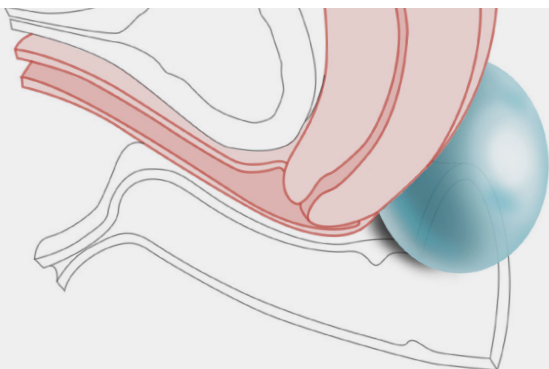


USER GUIDE



CLINICAL FEMALE PELVIC TRAINER (CFPT) MK 3

ADVANCED



This product is available
in light and dark skin tones

60905

60935

FOR MORE SKILLS TRAINING PRODUCTS VISIT

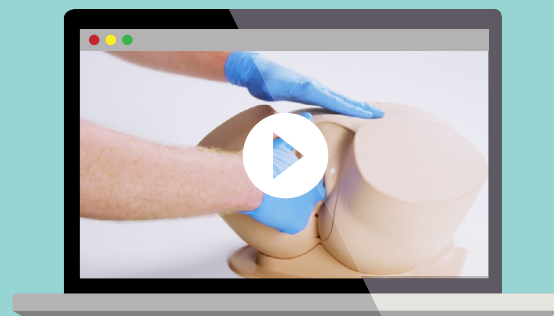
limbsandthings.com

Sussex Street, St Philips, Bristol, BS2 0RA, UK | sales@limbsandthings.com | +44 (0) 117 311 0500

INDEX

PACKAGE SUPPLIED	3
SAFETY & CLEANING INSTRUCTIONS	4
SET UP	5
• SETTING UP THE CERVICAL FEMALE PELVIC TRAINER	5
• CHANGING THE UTERINE MODULES	6
TRAINING	7
• BI-MANUAL EXAMINATION	7
CLEANING & STORAGE	7
• CLEANING & STORAGE AFTER USE	7

TAKE A LOOK
AT OUR **VIDEO**



VISIT THE WEBSITE
limbsandthings.com

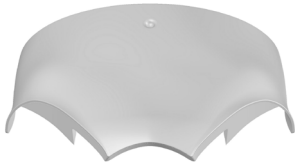
OR YOUTUBE CHANNEL
youtube.com/limbsandthings

PACKAGE
SUPPLIED

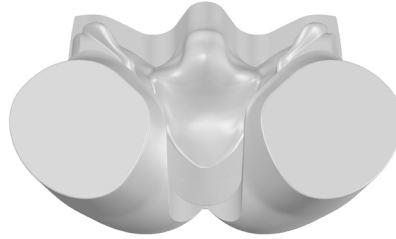
CFPT ABDOMINAL INSERT

60910

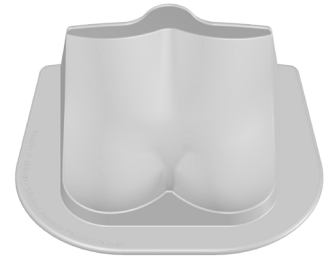
60936



LOWER TORSO



BASE



CFPT MODULE 1 Normal - Nulliparous Cervix

60920

60937



WATER-BASED LUBRICANT

00293



CARRY CASE



CFPT MODULE 2

Large Fibroid - Nulliparous Ectropion Cervix

60921

60938



CFPT MODULE 3

Small Fibroid - Nulliparous Polyp Cervix

60922

60939



CFPT MODULE 4

Ovarian Cyst - Multiparous Cervix

60923

60940



CFPT MODULE 5

Retroverted - Multiparous Cervix

60924

60941



CFPT MODULE 6

10-12 Weeks Pregnant

60925

60942

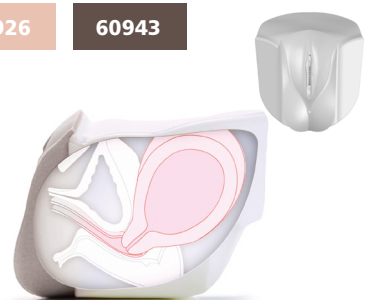


CFPT MODULE 7

14-16 Weeks Pregnant

60926

60943



► Images above are for information purposes & show a simplified representation of anatomy within the CFPT Modules

SAFETY & CLEANING INSTRUCTIONS

READ THE SAFETY INSTRUCTIONS CAREFULLY BEFORE USING YOUR CLINICAL FEMALE PELVIC TRAINER

DO's



Follow all instructions. Keep these instructions. Heed all warnings.

Only use water-based lubricant, such as the one supplied with this model.



Wear gloves at all times and remove all jewellery items. Sharp surfaces such as finger nails and rings can lead to damage of silicone parts.

Lubricate your examining fingers before insertion.



Clean the product with a damp soft cloth or sponge, using only warm water with mild detergent, after every training session.

STORAGE & TRANSPORTATION



Always ensure that the products are properly packed and secured during transportation and storage in order to prevent personal injury or damage to the product.

DON'Ts



Do not install near any heat sources, do not expose the product to flames or use near naked flame sources. Do not use flammable solvents near or on this product.

Do not use any attachments other than those supplied by the manufacturer.



Do not wear any jewellery items.

Do not use if the skin is torn.

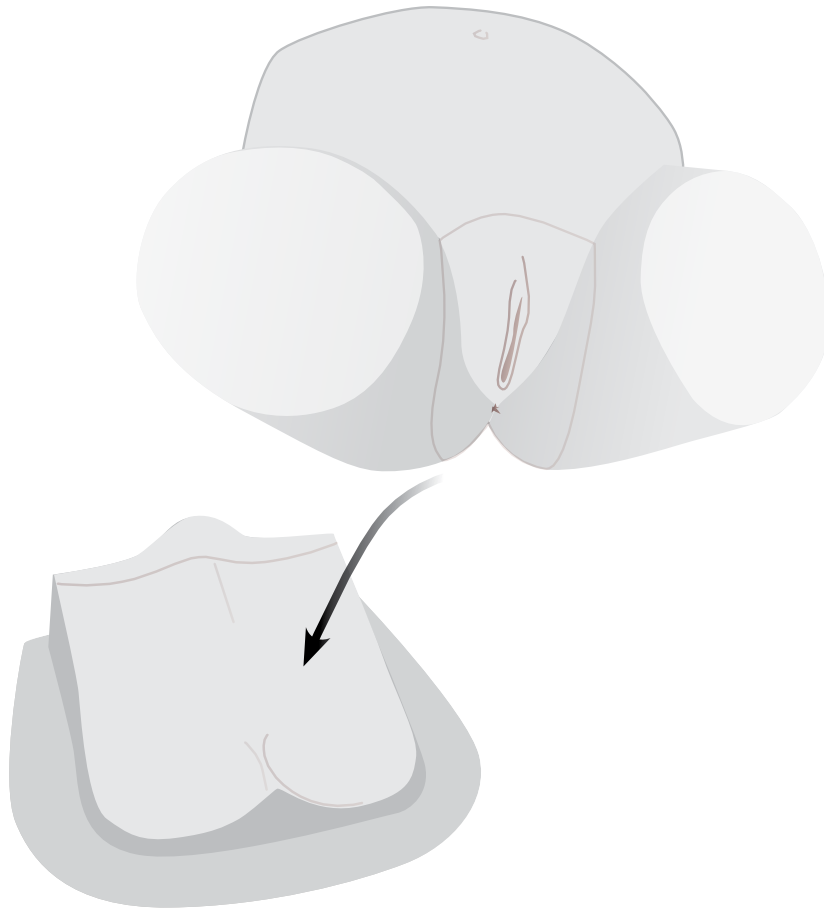


Do not disassemble the product or attempt to repair a faulty unit, please return the product to Limbs & Things for assessment and repair.

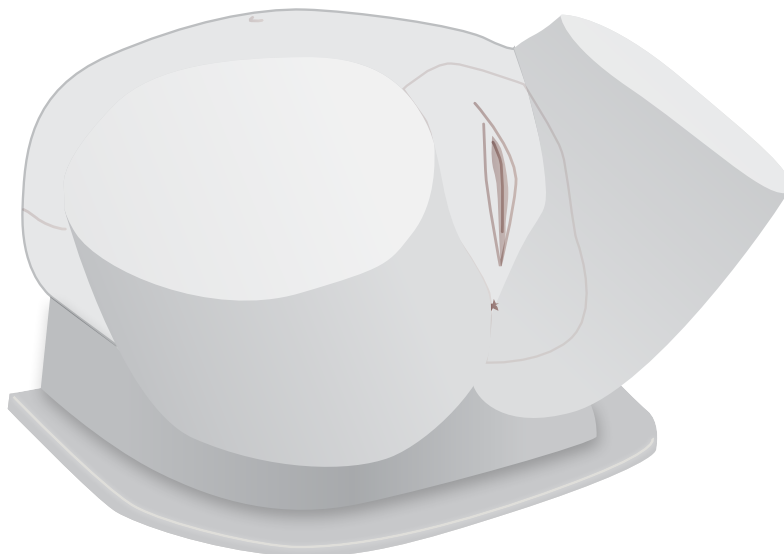
SET UP

SETTING UP THE CLINICAL FEMALE PELVIC TRAINER

1



2



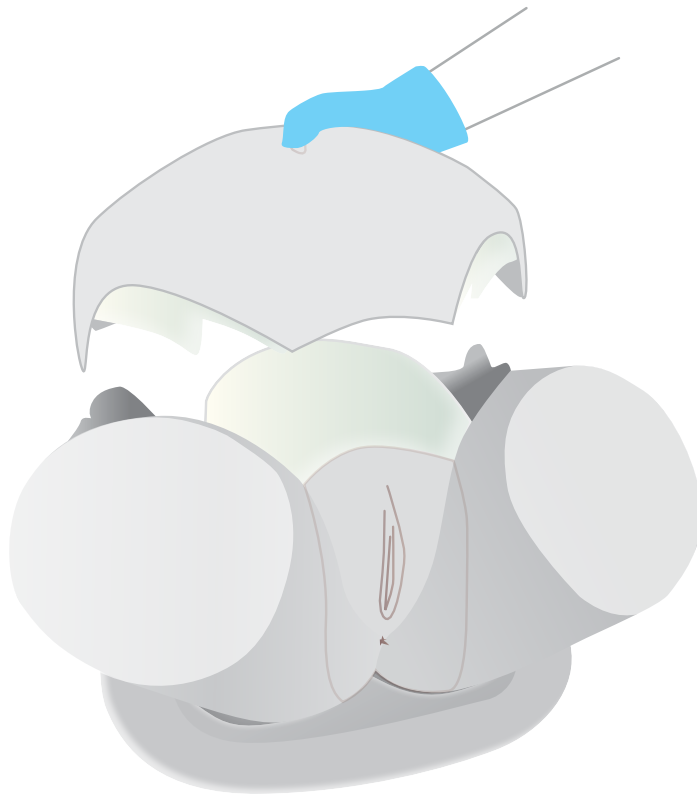
SET UP

CHANGING THE UTERINE MODULES

1



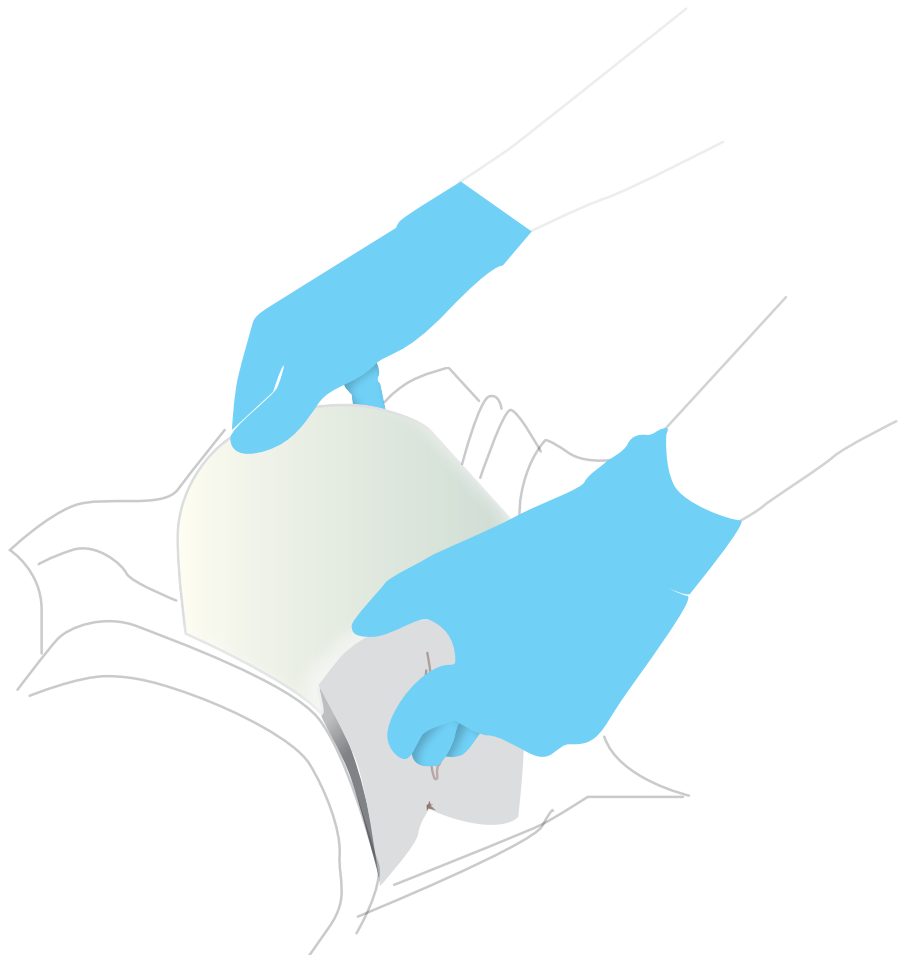
LIFT THE ABDOMINAL
INSERT UP FROM THE
TOP OF THE TRAINER



2



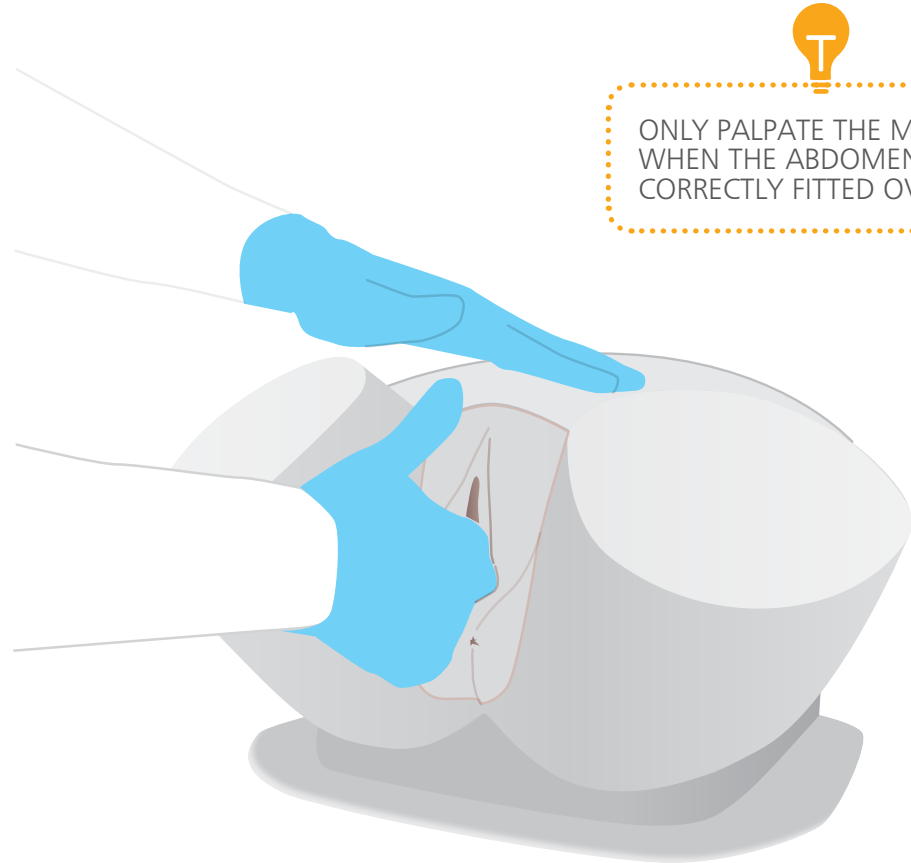
LIFT THE MODULE OUT
USING BOTH HANDS



TRAINING

PERFORMING THE BI-MANUAL EXAMINATION

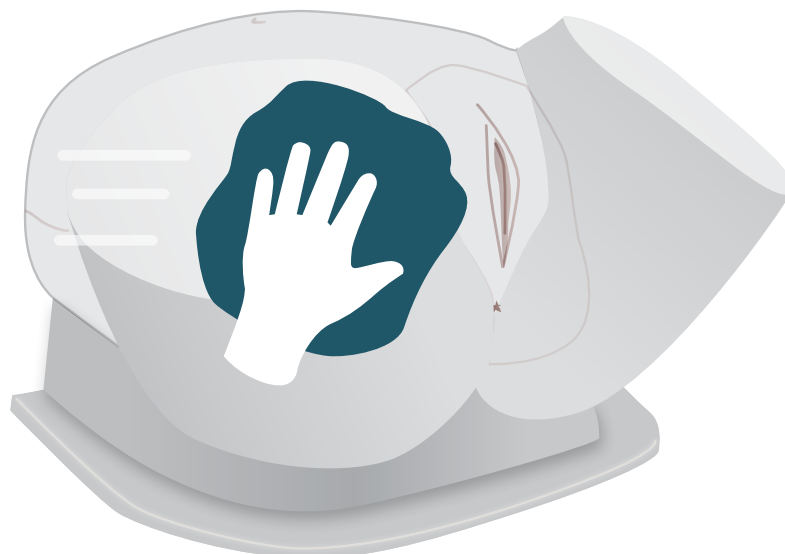
- Wear gloves at all times and remove all jewellery items.
- Lubricate prior to examination.



ONLY PALPATE THE MODULE WHEN THE ABDOMEN IS CORRECTLY FITTED OVER IT

CLEANING & STORAGE

- Wipe off excess lubricant with a soft cloth
- Clean off any surface dirt with a damp, soft cloth, using only warm water and mild detergent



YOU MAY ALSO BE INTERESTED IN...



WOMEN'S
HEALTH
Breast Examination

BREAST EXAMINATION TRAINER - STANDARD & ADVANCED

STANDARD

40200

41200

ADVANCED

40201

41201

