



# SHOULDER INJECTION TRAINER RANGE

## 70200 70219 PALPATION GUIDED

The accompanying android app allows learners and teachers to visualize the underlying anatomy, as well as clearly signalling success.



Designed in collaboration with clinicians, this range combines physical practice with the guidance of technology. It provides a repeatable teaching and training platform for shoulder injections in the 4 most common sites.

Both models share a common torso but offer different levels of complexity to support trainees from early learning through to specialist level.

## 70202 70221 ULTRASOUND GUIDED

Caters for ultrasound guided techniques, as well as allowing injection and aspiration of fluids under ultrasound.



*Learning has never been more lifelike*

[limbsandthings.com](http://limbsandthings.com)

# PALPATION GUIDED

## FEATURES:

### REALISM

- Discrete muscle and skin layers for realistic needle feel

### KEY FEATURES

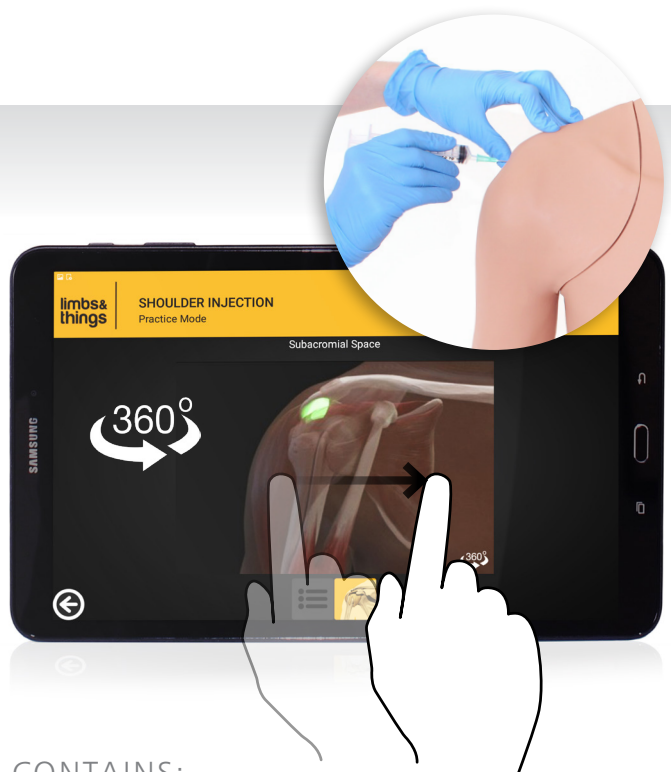
- Palpation to find the 4 most common injection sites
- Instant feedback for the trainee when a site is correctly located
- Injections from multiple approaches to allow for different preferences
- Suitable for postgraduate learning
- App features full 360-degree view of underlying anatomy and injection site to aid learning
- Cost effective replacement skins

### VERSATILITY

- Each skin can withstand up to 500 injections per site (x1 spare shoulder skin supplied)
- Simple Bluetooth connection between app and trainer
- Requires only a standard needle (supplied)
- Batteries (x2 AA supplied) last for up to 500 hours

### SAFETY

- Latex free

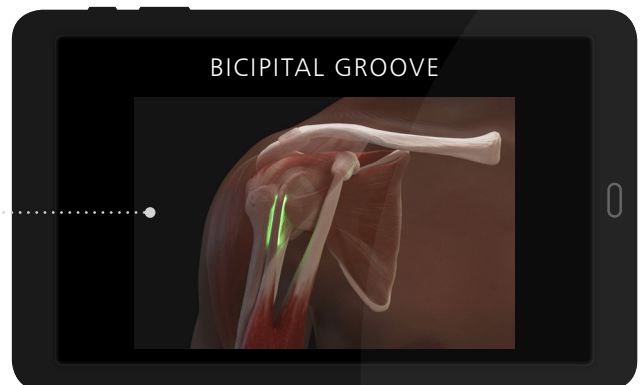


## CONTAINS:

- Shoulder Module - Palpation Guided
- Shoulder Skin (x1 spare)
- Shoulder Torso
- Needle Set
- Android Tablet
- Elbow
- AA Batteries (x2)
- Carry Case

## SKILLS:

- Practice multiple approaches to specific sites
- Identification of anatomical landmarks using palpation guidance
- 4 common injection sites:
  - Acromioclavicular Joint
  - Glenohumeral Joint
  - Bicipital Groove
  - Subacromial Space
- Rotation of the shoulder to locate head of the humerus



*The application includes interactive shoulder anatomy and links to injection technique guides. Available as a free download on [limbsandthings.com](http://limbsandthings.com)*

# ULTRASOUND GUIDED

## FEATURES:

### REALISM

- Innovative materials within the shoulder create close to life ultrasound images

### KEY FEATURES

- Eco lucent materials visible under ultrasound, represent the key internal landmarks
- Successful injection can be confirmed by visualizing fluid entering the site, or by aspirating fluid
- The quantity of fluid in the Subdeltoid Bursa can be adjusted, from no fluid present to a fluid-filled distension for differing skill levels
- Nerve block functionality - allows trainees to view and inject around the Suprascapular nerve

### VERSATILITY

- Watertight and durable up to 400 injections per site
- Altering the size of the bursa allows trainers to change the level of difficulty of training (less fluid is more challenging to inject)
- Synovial fluid has a realistic color

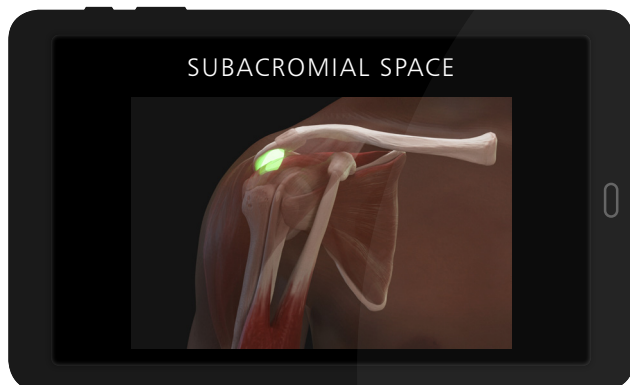
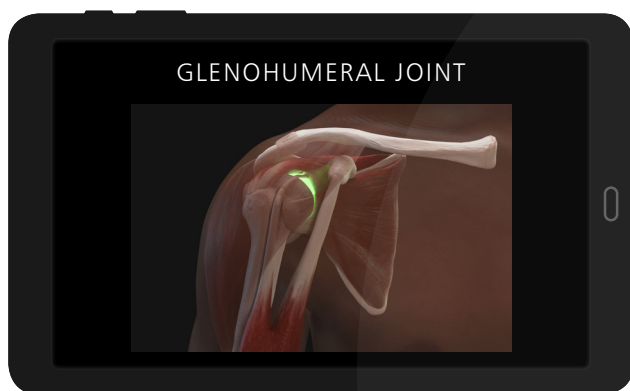
### SAFETY

- Latex free



## CONTAINS:

- **Shoulder Module - Ultrasound Guided**
- **Shoulder Torso**
- **Ultrasound Shoulder Filling Kit**
- **Needle Set**
- **Synovial Fluid (250ml)**
- **Elbow**
- **Carry Case**



## SKILLS:

- Patient positioning and management
- Identification of anatomical landmarks using ultrasound guidance
- 4 common injection sites:
  - Acromioclavicular Joint
  - Glenohumeral Joint
  - Biceps Tendon Sheath (which lies in the Bicipital Groove and surrounds the tendon)
  - Subdeltoid Bursa (in the Subacromial Space)
- Competence using ultrasound technology to perform injections in different planes using different approaches
- View under ultrasound the suprascapular nerve

## CURRICULUM REFERENCES:

### UNDERGRADUATE

*Recommendations for Clinical Skills Curricula for Undergraduate Medical Education, Association of American Medical Colleges, 2008, Appendix B; Clinical Testing and Procedural Skills, p.26*

### FAMILY MEDICINE RESIDENCY

<http://mahec.net/?/residency-and-student-info/residency-program/family-medicine-asheville/our-curriculum>

### GRADUATE MEDICAL EDUCATION IN PAIN MEDICINE

*ACGME Program Requirements for Graduate Medical Education in Pain Medicine (Anesthesiology, Neurology, or Physical Medicine and Rehabilitation), Accreditation council for Graduate Medical Education, effective 2017, p.17*

### GRADUATE MEDICAL EDUCATION IN PHYSICAL MEDICINE AND REHABILITATION

*ACGME Program Requirements for Graduate Medical Education in Physical Medicine and Rehabilitation, Accreditation council for Graduate Medical Education, effective 2017, p.17*

*ACGME Case Log Entry System, Review Committee for Physical Medicine and Rehabilitation, 2014\**

### MUSCULOSKELETAL AND SPORTS MEDICINE

*Musculoskeletal and Sports Medicine PM&R Curriculum Guidelines, American Academy of Medicine and Rehabilitation, p.5*

### GRADUATE MEDICAL EDUCATION IN ORTHOPAEDIC SURGERY

*The Orthopaedic Surgery Milestones Project, A Joint Initiative of The Accreditation Council for Graduate Medical Education and The American Board of Orthopaedic Surgery, July 2015, p.35*

### RHEUMATOLOGY FELLOWS

*Core Curriculum Outline, for Rheumatology Fellowship Programs, American College of Rheumatology, 2015, p 16 and p 85*

### GRADUATE MEDICAL EDUCATION IN MUSCULOSKELETAL RADIOLOGY\*

*ACGME Program Requirements for Graduate Medical Education in Musculoskeletal Radiology Accreditation council for Graduate Medical Education, effective 2017, p.2*

### NURSE PRACTITIONER (NP) AND PHYSICIAN ASSISTANT (PA) SPECIALISING IN RHEUMATOLOGY

*Nurse Practitioner (NP) and Physician Assistant (PA) Rheumatology Curriculum Outline, American College of Rheumatology (ACR) and Association of Rheumatology Health Professionals (ARHP), 2017, p.8*

### PHYSICIAN ASSISTANT (PA) SPECIALISING IN ORTHOPAEDICS

*PAs and OPAs, The Distinctions, American Academy of Pas, 2016, p.5*

\* Ultrasound Only

YOU MAY  
ALSO BE  
INTERESTED IN...

SONON ULTRASOUND  
IMAGING SYSTEM - LINEAR

HC-300L



KNEE ASPIRATION &  
INJECTION TRAINER WITH  
ULTRASOUND CAPABILITY

70103 70114



FOR DEMONSTRATION OR TO ORDER

**Limbs & Things Inc.** P.O. Box 15669, Savannah, GA 31416, USA

**T:** (912) 629-0357 **E:** [customerservice@limbsandthings.com](mailto:customerservice@limbsandthings.com)

**limbsandthings.com**

USA V.2 AUGUST 2020